

## SEND Programme 2022/25

### What we are seeking to achieve:

- **Reset the tone of the SEND agenda:** Whilst we recognise that SEND sits within a very challenging financial context, our core aim is to work together to improve outcomes, whilst using resources responsibly and advocating for appropriate funding to meet the needs of some of the most vulnerable children, young people and families within our communities and region.
- **Hear and act on the voices and experiences of children and young people with SEND and their families:** We will place the experiences of our children, young people and families at the heart of our work so it shapes and challenges our priorities, what good looks like and what we can do better.
- **Best practice and collaboration to improve outcomes and efficiency:** Seeking out best practice to improve outcomes for children and young people, strengthen the offer and equity of access, raise aspirations and enhance efficiency. Working together to support families to thrive in their communities and achieve best independence, and recognising that children, young people and families live within communities that cut across local authority boundaries and opportunities for better collaboration across commissioning, delivery, inclusiveness and quality.
- **Responding regionally to the changing landscape:** Making sure we are coordinated and attune to changing needs of the SEND landscape – including post Covid assurance, regulatory and statutory changes and transformation of health commissioning and delivery arrangements with Sustainable Transformation Plan and Integrated Care developments.

### Key principles:

- We are committed to the ambitions of the SEND reforms, working with children, young people and families so that children and young people experience improved outcomes and achieve their best independence.
- We want all children and young people with SEND to thrive in their families, local schools and communities.
- We will work in partnership to improve outcomes and enable independence for successful transition to and in adulthood.
- We will do all we can to ensure early years settings, schools and further and higher education providers are inclusive, and that parents and carers are able to exercise parental choice in the best interests of their children.
- We will work together to shape local health, care, education, support, and free time provider markets to empower children, young people and families to flourish in their communities.
- Recognising autonomy of local authorities and diversity of their community's needs and looking to work regionally only where it makes sense to do it together.

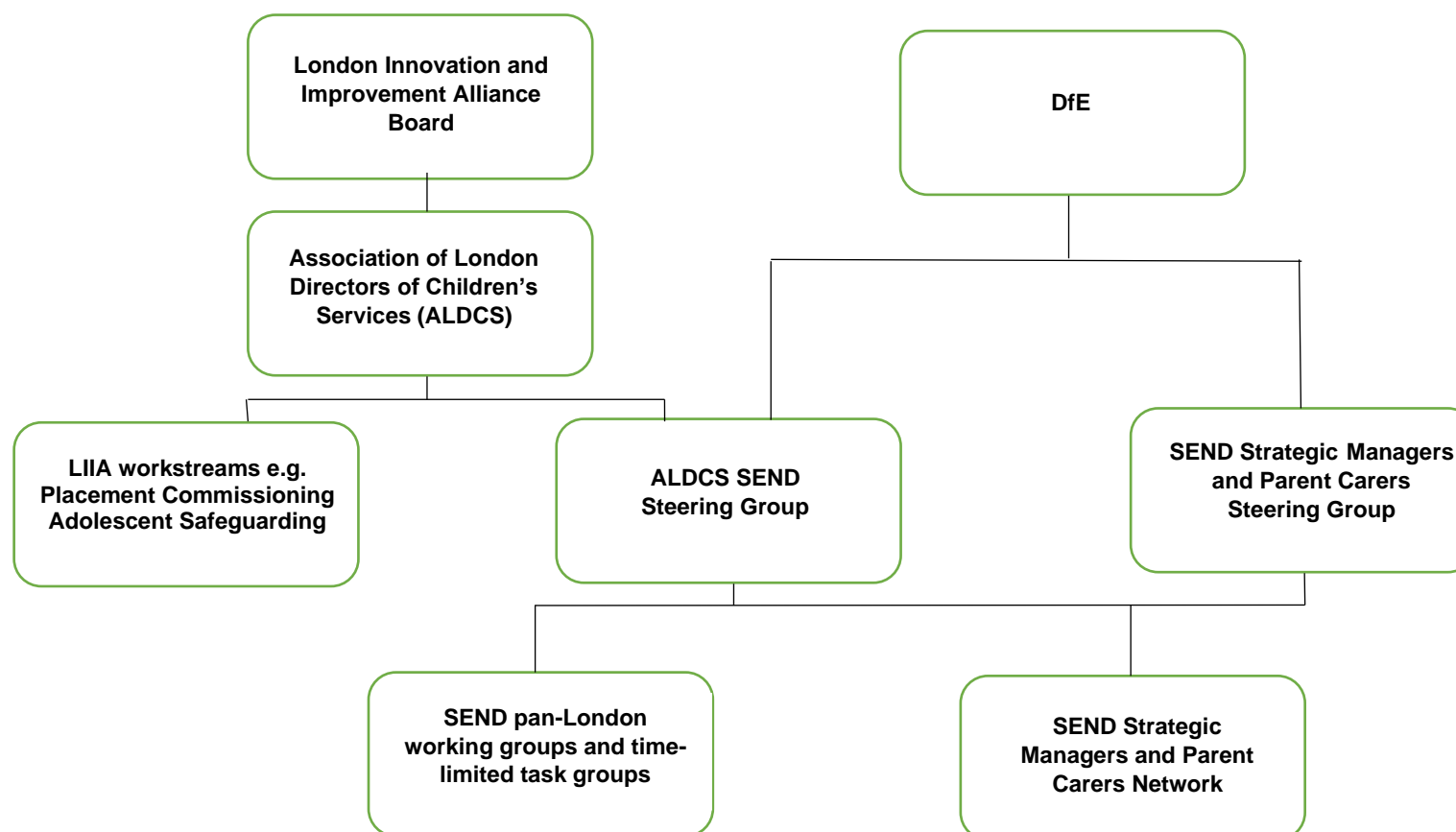
## How we will engage others and oversee the programme

### Engaging others:

- We are engaging key pan-London groups in the development and delivery of the programme including the SEND Strategic Managers and Parent Carers Network, London Region DfE SEND Steering Group and London Innovation and Improvement Alliance. We are working closely with children, young people and families and key partners such as Health.

### Programme oversight:

- The programme oversight is designed to provide clear oversight and greater integration of pan-London programmes to improve outcomes for children and young people with SEND. We have developed more integrated governance arrangements, aligned with DfE regional support as set out below. Partner organisations such as Health are closely involved through NHSE/I and formal links with Integrated Care Boards and Partnerships are being strengthened.





## Membership of ALDCS SEND Steering Group

- Lead DCS for SEND
- Assistant Directors SEND (one from each of 4 sub-regions)
- Chair DCO/DMO London Network
- London Region SEND Co-ordinator
- London Lead for National Network of Parent Carer Forums
- London Region Clinical Lead (Children and Young People)
- SEND Strategic Managers and Network Chair
- Public Health England
- NHS England and NHS Improvement
- DfE London SEND Advisers
- Preparation for Adulthood Senior Development Adviser
- London Councils representative
- London Councils representative
- London Innovation and Improvement Alliance SEND Lead
- London Innovation and Improvement Alliance (group support)

## Priorities for 2022-25

### Improving outcomes for children and young people with SEND:

- Building on opportunities in the Green Paper to deliver the right support in the right place at the right time for children with SEND in London.
- Improving use of data to know ourselves and improve outcomes for children and young people with SEND.
- Jointly working with Integrated Care Partnerships to develop a more consistent offer for children with SEND.
- Promote inclusion and share learning on inclusive practice.
- Developing greater independence and preparation for adulthood, with a focus on regional collaboration 16-25 - transition pathways, education, training and employment.
- Joint work on commissioning, for children and young people with a high level of need, with focus on ASD/SEMH, to improve outcomes, working with the Placement Commissioning workstream.



- Ensuring best use of funding to meet needs.
- Improve collaboration and performance through developing and offering peer challenge and peer reviews with key stakeholders to improve outcomes for children and young people with SEND.

#### Support learning and improvement:

- We will support the delivery of the priorities through a programme of pan-London ALDCS SEND Learning events co-ordinated with Health, SEND Strategic Managers and Parent Carers Network and DfE commissioned strategic partners.
- We will develop a repository of effective/innovative practice in SEND to support collaboration, enhanced use of resources, strengthened equity of offer and improvement in outcomes for children and young people.

## London SEND Programme Plan 2022-23

<b>SEND Programme Plan (2021–2022) – DRAFT 21/06/2022</b>			
<b>Priority</b>	<b>Responsibility Group/Lead/Delivery partners</b>	<b>Delivery, timescale and lead where assigned</b>	<b>How will we know we are making a difference?</b>
Building on opportunities in the Green Paper to deliver the right support in the right place at the right time for children with SEND in London	ALDCS SEND SG/SEND Leads	<ul style="list-style-type: none"> <li>• Pan-London SEND Summit to share perspectives and develop joint response to Green Paper – held on 10/6/22 (lead ALDCS SEND Steering Group)</li> <li>• Secure opportunities for London to test Green Paper proposals (lead – ALDCS SEND Steering Group)</li> <li>• Pan-London SEND Summit to be held in Spring 2023, linked with Post-Green Paper developments and disseminating learning from London SEND Plan (lead – ALDCS SEND Steering Group)</li> </ul>	<ul style="list-style-type: none"> <li>• Joint response developed and evaluation through analysis of feedback.</li> <li>• Opportunities secured, learning shared and informed future development.</li> <li>• Evaluation of Summit demonstrates value and informs future work</li> </ul>
Improving use of data to know ourselves and improve outcomes for children and young people with SEND	ALDCS SEND SG/SEND Leads/Liia Data Team	<ul style="list-style-type: none"> <li>• Develop Pan-London SEND data dashboard, linked to DfE Index and Health data (lead – ALDCS SEND Steering Group, Liia)</li> </ul>	<ul style="list-style-type: none"> <li>• Pan-London Data Dashboard developed and reviewed at ALDCS SEND Steering Group and disseminated to all local authorities to support self-evaluation</li> </ul>
Jointly working with Integrated Care Partnerships (ICPs) to develop a more consistent offer for children with SEND	ALDCS SEND SG/Health	<ul style="list-style-type: none"> <li>• Develop joint strategic work with ICPs to improve outcomes for children with SEND (lead ALDCS SEND Steering Group)</li> <li>• Develop a pan-London Therapies Audit to develop joint understanding of current offer pan-London and in local areas (lead ALDCS SEND Steering Group, NHSE)</li> </ul>	<ul style="list-style-type: none"> <li>• ICS Plans include work to improve outcomes for children with SEND</li> <li>• Pan-London Therapies audit commissioned, with initial focus on baselining.</li> </ul>

		<ul style="list-style-type: none"> <li>Strengthen joint working with developing role of ICSs across London (ALDCS SEND Steering Group)</li> </ul>	<ul style="list-style-type: none"> <li>Strengthened joint working demonstrated through profile in strategic plans and joint priorities on SEND.</li> </ul>
Promote and share learning on early support and inclusive practice	ALDCS SEND SG/SEND Leads	<ul style="list-style-type: none"> <li>Identify what is working well in London in early support, particularly early years, and promote across London and nationally through DfE what works programme. (lead – ALDCS SEND Steering Group)</li> <li>Explore potential for Pan-London Charter to promote effective practice (lead – ALDCS SEND Steering Group)</li> <li>Promote Early Intervention linked to Early Help/Family Hubs</li> <li>Identify what is working well in London in inclusion and promote across London and nationally through DfE what works programme. (lead – ALDCS SEND Steering Group)</li> </ul>	<ul style="list-style-type: none"> <li>Practice examples promoted of what works</li> <li>Charter developed and practice promoted</li> <li>Practice promoted</li> <li>Practice examples promoted of what works</li> </ul>
Promote and share learning on workforce development	ALDCS SEND SG/ALDCS Workforce Programme, SEND Leads	<ul style="list-style-type: none"> <li>Promote effective practice in workforce development</li> <li>Draw learning from ALDCS Workforce programme on Social Care workforce to inform developments for SEND workforce</li> </ul>	<ul style="list-style-type: none"> <li>Practice promoted</li> <li>Model developed for agency staff in London drawing on social care approach</li> </ul>
Developing greater independence and preparation for adulthood, with a focus on regional collaboration 16-25 -	ALDCS SEND SG/SEND Leads/PfA leads	<ul style="list-style-type: none"> <li>Disseminate learning from the practice development in 2021-22 (lead – ALDCS SEND Steering Group)</li> </ul>	<ul style="list-style-type: none"> <li>Evidence of learning and changes in practice from feedback</li> </ul>

<p>transition pathways, education, training and employment</p>		<ul style="list-style-type: none"> <li>• Promote employment pathways including the Green Paper proposals re Supported Internships, Supported Employment Forums, Apprenticeships and Traineeships (lead – ALDCS SEND Steering Group)</li> <li>• Share good practice on transition from EHCP to greater independence (lead – ALDCS SEND Steering Group)</li> </ul>	<ul style="list-style-type: none"> <li>• Evidence of increased opportunities pan-London</li> <li>• Good practice shared and feedback provides evidence of value</li> </ul>
<p>Joint work with Health to develop more local pathways for children and young people with ASD/SEMH to inform future commissioning, helping to address resource pressures and improve outcomes, working with the Placement Commissioning Panel</p>	<p>ALDCS SG/ALDCS Placement Commissioning Panel</p>	<ul style="list-style-type: none"> <li>• Review report to improve understanding of needs, current provision and options for the future to inform local and regional commissioning (lead ASD/SEMH Steering Group)</li> </ul>	<ul style="list-style-type: none"> <li>• Joint report published.</li> <li>• Options developed for future regional and local commissioning</li> </ul>
<p>Ensuring best use of funding to meet needs</p>	<p>ALDCS SG/SEND Leads/Finance Leads</p>	<ul style="list-style-type: none"> <li>• Promote collaboration and share learning re improving value for money in High Needs Block through two pan-London SEND Finance workshops, linked to DfE Delivering Better Value Programme (lead ALDCS SEND Steering Group/Finance)</li> <li>• Arrange SEND Commissioning Workshop and explore benefits of ongoing network for SEND commissioners (lead ALDCS SEND Steering Group/Liia)</li> </ul>	<ul style="list-style-type: none"> <li>• Evaluation from workshops demonstrates value from collaboration and shared learning</li> <li>• Workshop held and ongoing network developed subject to identified benefits from workshop</li> </ul>
<p>Improve collaboration and performance through developing and offering peer challenge and peer reviews with key stakeholders to</p>	<p>ALDCS SG/SEND Leads</p>	<ul style="list-style-type: none"> <li>• Manage peer reviews on a thematic basis, with a focus in 2021-22 on themes selected by local authorities from: Inclusion; Commissioning; and</li> </ul>	<ul style="list-style-type: none"> <li>• Two peer reviews held</li> <li>• Feedback from peer reviews provides evidence</li> </ul>

improve outcomes for children and young people with SEND		Preparation for adulthood (lead ALDCS SEND Steering Group, LIIA)	of learning and improvements.
Improve regional collaboration and learning through SEND Learning events co-ordinated with DfE SEND Regional Co-ordinator programme, SEND Strategic Managers and Parent Carers Network and DfE commissioned strategic partners	ALDCS SG, SEND Strategic Managers and Parent Carers SG and Network	<ul style="list-style-type: none"> <li>• London SEND Summit to be held in Spring 2023, to disseminate learning from the programme and address implications of national developments post-Green Paper (lead ALDCS SEND Steering Group, LIIA)</li> <li>• Share learning from SEND inspections and respond to emerging themes through focused learning events (ALDCS SEND Steering Group, LIIA)</li> <li>• Programme of learning events to be managed by SEND Strategic Managers and Parent Carers SG/Network (lead SEND Strategic Managers and Parent/Carers Steering Group)</li> </ul>	<ul style="list-style-type: none"> <li>• Feedback from events demonstrates value of learning</li> <li>• Future programme informed by feedback</li> <li>• Feedback demonstrates value of learning from events</li> </ul>
Engagement with stakeholders to promote collaborative approaches	ALDCS SEND SG, SEND Leads	<ul style="list-style-type: none"> <li>• Publish monthly SEND Newsletter for London (lead – LIIA)</li> <li>• Develop stronger voice for children and young people into regional developments, working with Health for an integrated approach (lead – ALDCS SEND Steering Group)</li> </ul>	<ul style="list-style-type: none"> <li>• Annual feedback demonstrates value</li> <li>• Stronger voice influences developments with feedback</li> </ul>