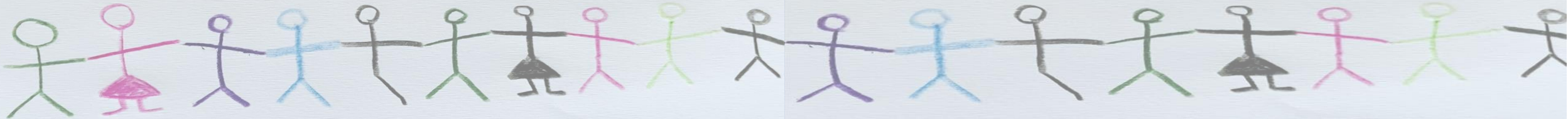


LIIA / ALDCS Summit 2023: *'Together for London's Children'*



Follow us on Twitter [@londonliia](https://twitter.com/londonliia) #TogetherForLondonsChildren



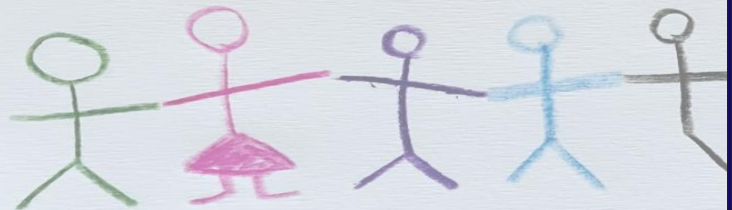
Workshop 2

Resources and Financial Sustainability

Chairs:

Cllr Penny Frost – Shadow London Councils Lead for Schools and Children’s Services and Chair of Education and Children’s Services Committee, Richmond Council

Chris Munday – ALDCS Lead for Resources and Sustainability and DCS, London Borough of Barnet



Workshop 2

Resources and Financial Sustainability

Presentation:

Caroline Coady – *Assistant Director for Social Care, National Children’s Bureau*

Panel:

Elaine Allegretti – *ALDCS Lead for SEND and DCS, London Borough of Barking and Dagenham*

Martin Pratt – *ALDCS Chair and DCS, London Borough of Camden*

Angela Elliott – *Assistant Director of Strategy, Policy and Commissioning, London Borough of Islington*



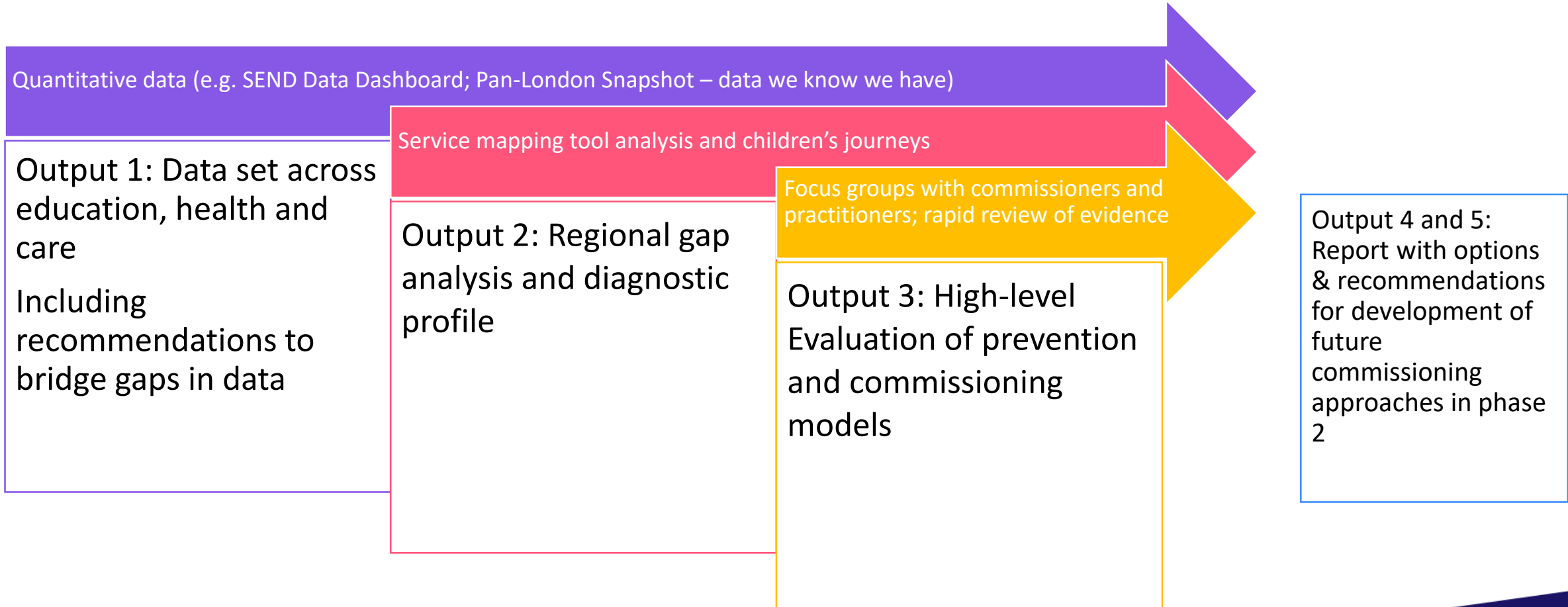
What have we done?

- **Pan-London research and projects on key High Cost/Low Incidence Needs (HCLI):**
 - *Research into Commissioning Options for children with ASD/SEMH*
 - *Joint Commissioning Framework: Residential Family Assessments*
 - *Vulnerable Adolescents*
 - *Children at Risk of Remand*
 - *Secure Children's Home*
- **Development of pan-London Dynamic Sufficiency Tool.**
- **Pan-London work to understand and address shortfalls in provision:**
 - *Supported applications for Children's Home capital funding (7 successful London local authorities)*
 - *Agreement to new Alternative to Custody (10 beds across 2 units – operational in Jan/Feb)*
 - *Secure Children's Home (24 bed + 6 re-integration beds)*
- **Review with TPX Impact to shape future pan-London commissioning.**
- **Cabinet agreements to Pan-London Vehicle for Commissioning** (*secure Children's Home with opportunity to expand to other HCLI placements*)

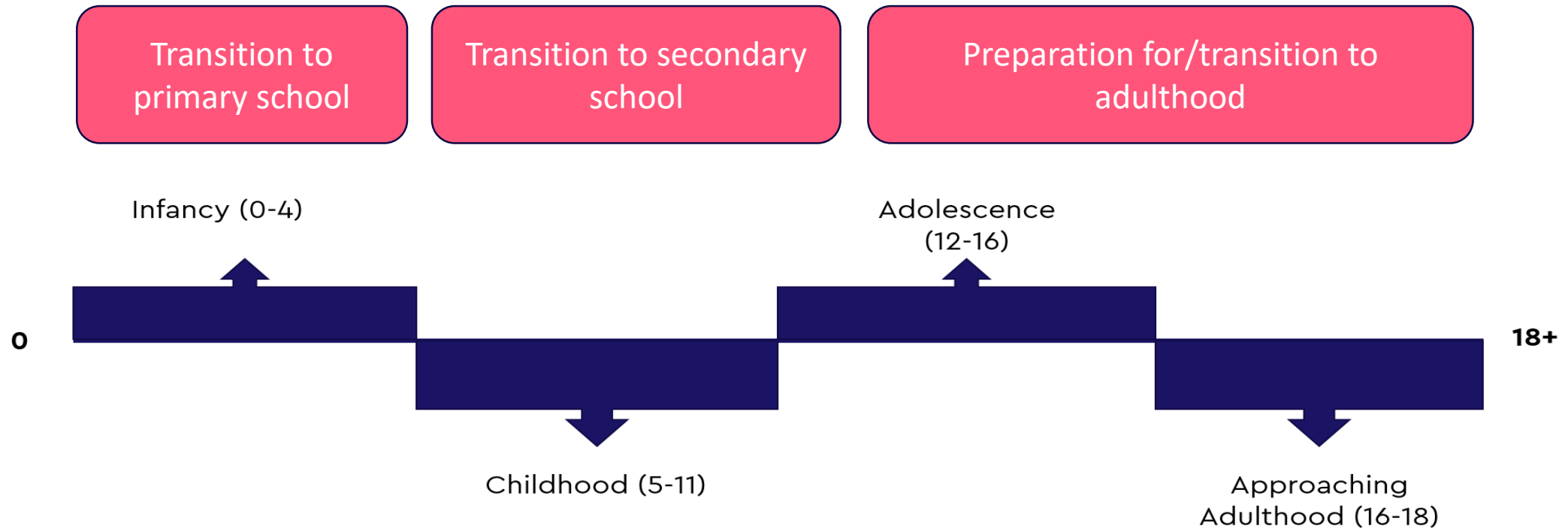
Exploring commissioning options for autistic children with LD and/or SEMH

Key findings and recommendations – Caroline Coady

Methodology



Key escalation points



Missed opportunities

0-4

Lack of early identification and post-diagnosis information and support

Lack of early cross-agency engagement

Lack of information and support for the whole family

5-11

Limited availability and access to inclusive universal supports through the local offer

Limited awareness of roles, responsibilities and pathways across education, health and care

Limited availability and access to wraparound support e.g. proportionate short breaks pathways and needs-led eligibility approaches

Missed opportunities to collaborate across-agencies

12-15

Missed opportunities for cross-agency collaboration

Lack of oversight and monitoring of this group of young people

Lack of support for the whole family to continue caring

Lack of trauma-informed practice and consistent approaches to de-escalation from crisis

Limited capacity for more bespoke and creative solutions that can genuinely respond to the needs of young people and families

Large gap in provision in between 'day special school and overnight short break' and residential special school

16+

Misaligned services and supports across children's and adults' services

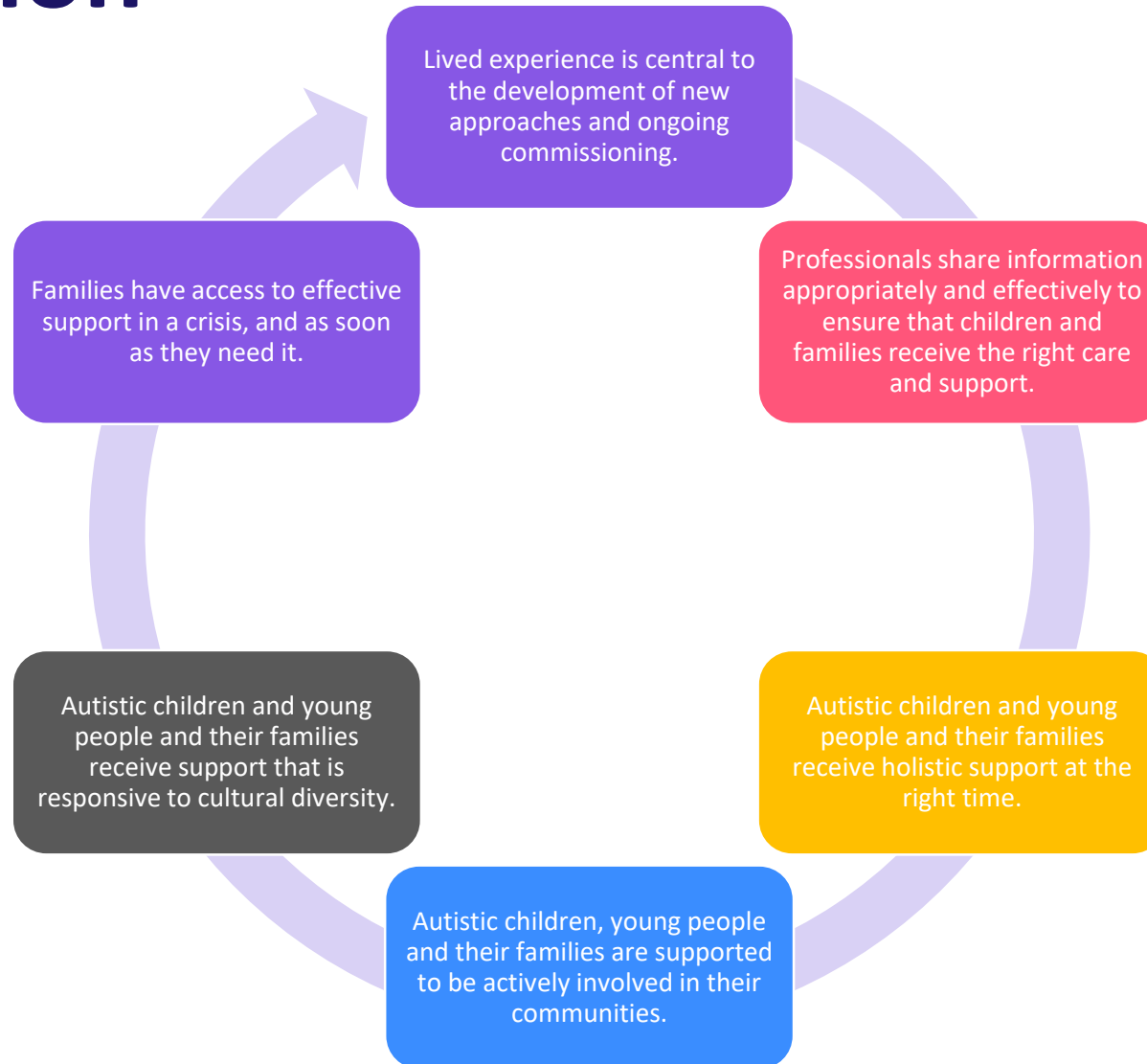
Late engagement with planning for adulthood

Lack of support for the whole family to continue caring

Lack of trauma-informed practice and consistent approaches to de-escalation from crisis

Limited capacity for more bespoke and creative solutions that can genuinely respond to the needs of young people and families

A shared vision



Developing commissioning options

Prevention

Early identification

Diagnosis

Cross-agency
engagement

Emerging Crisis

Exclusion/school
placement breakdown

Role of other agencies

Risk and
accountability


YP with the most complex needs

Sufficiency, value and
appropriateness

Commissioning
decisions

Provider-led market

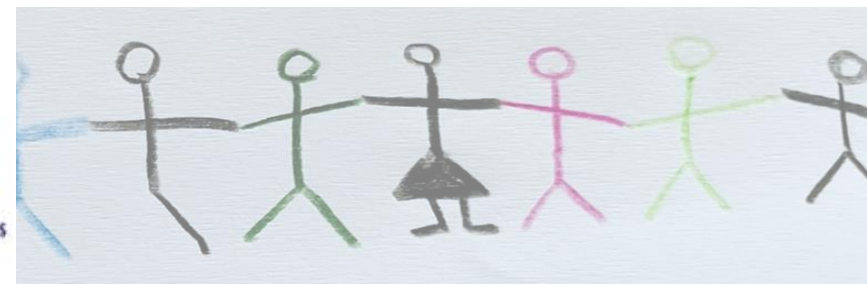
Recommendations for phase 2

- 
- Recommendation 1 – Identify and engage key partners across London at a regional, ICS and Local level who should be engaged in phase 2 developments and potential related finance streams
 - Recommendation 2 - Develop a data and evidence strategy for London to ensure accurate information on the needs of children and young people and the sufficiency of suitable provision can inform future commissioning for this group of children
 - Recommendation 3 – Identify potential regional/ICS/LA commissioning approaches to improve sufficiency, suitability and quality of interventions and provision for this group of children.
 - Recommendation 4 – Strengthen the approach to workforce development and sufficiency
 - Recommendation 5 – Identify opportunities for broader integration with wider work across London and nationally in relation to this group of children and young people

Groupwork

Improving sufficiency, value for money and outcomes for children through collaborative commissioning

1. How can we work together to improve our understanding of gaps in provision?
2. How can we work together across local authorities and with Health to develop more integrated approaches to commissioning and provision?
3. How can we work together to influence the market to address gaps in provision?





- Get in Touch:

LIIATeam@londoncouncils.gov.uk

- Visit our website:

liia.london

- Follow us on Twitter:

[@londonliia](https://twitter.com/londonliia)

- Join us on LinkedIn:

[London Innovation & Improvement Alliance \(LIIA\)](#)