



A new secure children's home for London

London local authorities are working together to deliver a much-needed secure children's home in London.



ALDCS

The Association of London
Directors of Children's Services

LiiA Together for
London's Children
LONDON INNOVATION AND IMPROVEMENT ALLIANCE

**LONDON
COUNCILS**

Secure care in a safe and therapeutic environment:

The plan is for the new service to provide welfare placements for up to 24 of the capital's most vulnerable children and young people.



Step down/transition from secure care:

The proposed service will also provide care and accommodation for up to 4 children who no longer need to live within a secure environment but will need a period of extra support to help them achieve a positive transition back into the community.

London local authorities plan to run these services in partnership with another organisation or group of organisations.

Integrated health and wellbeing services will be commissioned in partnership with the NHS.



About Secure Children's Homes

Secure children's homes provide 24-hour care for vulnerable children and young people aged between 10 and 17 who have a range of complex needs.

Local authorities place children and young people in secure children's homes (on welfare grounds) when they are a significant risk to themselves or others, and no other type of care placement can keep them safe.

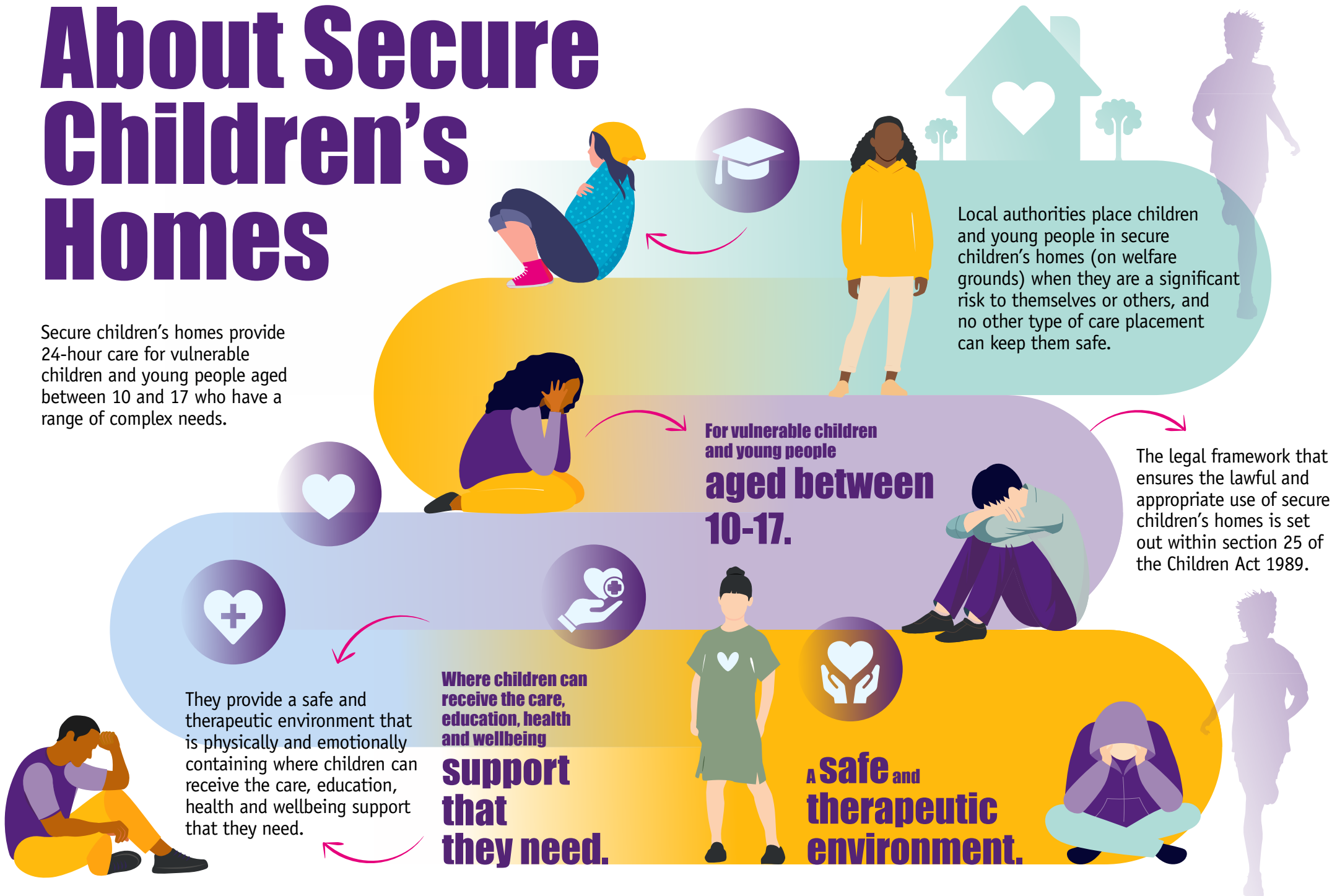
For vulnerable children and young people aged between 10-17.

The legal framework that ensures the lawful and appropriate use of secure children's homes is set out within section 25 of the Children Act 1989.

They provide a safe and therapeutic environment that is physically and emotionally containing where children can receive the care, education, health and wellbeing support that they need.

Where children can receive the care, education, health and wellbeing support that they need.

A safe and therapeutic environment.



Needs and circumstances of the children and young people who will need the new service...

Unmet emotional, mental and physical health needs

Already spent time in the care system

Missed a significant amount of education

Suffered a great deal of trauma in their lives

Been exposed to Adverse Childhood Experiences (ACES)

The majority of children who require secure care have...

Experienced a lot of instability including multiple placement breakdowns and unplanned moves

A complex children's social care history



Why does London need a new secure children's home?

Currently, there is a national shortage of welfare placements in secure children's homes, and there is no service of this kind in London.



This means some of London's most vulnerable children and young people are being placed in alternative accommodation that is not designed to meet their complex needs

Placements are usually around 200 miles away from their families, carers, friends and other people important to them.



They are also waiting too long for a placement and these are usually around 200 miles from London - far away from their families, carers, friends and other people that are important to them, even when this distance is not in their best interests.

When these children and young people are hundreds of miles from London, it has a negative impact on the work that local authorities, health and education services do to help them achieve a positive and safe transition back into the community. This work includes helping them to live safely with their family or carers again, or in a new care placement. It also means helping them back into school or college whilst ensuring they are able to access the services they will need to continue to stay safe and healthy.

To help children and young people achieve a positive and safe transition back into the community

Who is involved in this project?

The Association of London Directors of Children's Services (ALDCS)

ALDCS is the London professional network for Directors of Children's Services and the regional branch of the Association of Directors of Children's Services (ADCS). ALDCS provides strategic leadership and direction on issues affecting local authority Children's Services in London.

The London Innovation and Improvement Alliance (LIIA)

LIIA exists to support ALDCS to undertake a range of improvement and innovation activities that respond to the most pressing challenges in the children's services sector. LIIA is supporting ALDCS to develop and deliver the new secure children's home in partnership with the NHS.

London Councils

London Councils is the collective of London local government, the 32 boroughs and the City of London Corporation. These organisations come together through London Councils to work in collaboration to deliver their shared ambitions for London and Londoners.

LIIA is a team in London Councils.

Others involved in shaping and developing the proposals:

- Children, young people and adults with lived experience.
- Staff from the existing secure children's home estate.
- Professionals and experts from the wider social care, education and health sector.
- Other key stakeholders including the Department for Education who are providing funding for this project from the national secure children's homes capital programme.
- The development of the service will also continue to be informed by data and research evidence.



Find out more:

<https://www.liia.london/londons-secure-childrens-home-and-plv/>

Get in touch:

newlondonsch@londoncouncils.gov.uk