

# Welcome



The Association of London Directors of Children's Services (ALDCS)

# London Children's Services

# Summit 2025



# Summit Agenda



## Arrivals from 9am - tea and coffee

Ann Graham, Director for Children's Services, London Borough of Haringey (Event Comper)

## 9:30am - 09:45am: Welcome and Introduction to London's Reform and Change Ambition for Children

Welcome by Chair Cllr Ian Edwards - Leader London Borough of Hillingdon and London Councils Executive Lead for Schools and Children's Services  
Introduction by Florence Kroll CBE - Director for Children's Services, Royal Borough of Greenwich and Chair of Association of London Director of Children's Services (ALDCS)

## 9:45am - 10:05am: Key Note Speaker: Ministerial / Permanent Secretary Address from Department for Education

Janet Daby, Minister for Children, Families and Well-Being

## 10:05am to 10:15am: 'Practice Spotlight at the Heart of Sector-Led Improvement in London'

Introduced by Cllr Penny Frost - Lead Member for London Borough of Richmond

Glen Peache, Director of Family Services, Royal Borough of Kensington & Chelsea  
Bev Hendricks, Executive Director - Children, Lifelong Learning and Families, London Borough of Merton

## Practice Spotlight Briefings

- 10:15am: Hackney/Lewisham - Racial Equity
- 10:25pm: Haringey - Stop and Search
- 10:35am: Lambeth - Route to Independence Pathway

## 10:45am - 11:25am Practice Spotlight Marketplace (Break/Refreshments)

## Practice Spotlight Briefings

- 11:25pm: Redbridge - Your Choice - Introduced by Lib Peck, Director of the Mayor of London's Violence Reduction Unit (VRU)
- 11:35pm: Enfield - Enfield Communication Advisory Support Service (ECASS)

## 11:45am - 12:25pm: 'Effective Partnership Working with Health' - Panel Discussion

Introduced & Facilitated by Mayor Caroline Woodley - Mayor of Hackney

Speaker: Caroline Clarke, NHS London Regional Director

Panel discussion: Caroline Clarke, NHS London Regional Director, Tim Aldridge - Executive Director of Children and Learning for London Borough of Camden, Elaine Allegretti - Strategic Director Children's & Adults for London Borough of Barking & Dagenham

## 12 :25pm - 12 :45pm: Table Discussion - Looking Ahead for London's Children at a Time of Change

- Discussion Question: What shared challenges and opportunities should be prioritised as regional areas of collaboration in relation to reform and change?

## 12:45pm - 1:05pm: Plenary & Closing Remarks

Ade Adetosoye CBE - Chief Executive of the London Borough Bromley, Chief Executives Lead Adviser for Children Services

Florence Kroll CBE - Director for Children's Services, Royal Borough of Greenwich and Chair of Association of London Director of Children's Services (ALDCS)

## 1:05pm - 2:00pm Lunch, Networking & Practice Spotlight Marketplace



# Summit Resources



## ALDCS Summit App



## Practice Spotlight Digital Area



# Welcome and Introduction to London's Reform and Change Ambition for Children

Cllr Ian Edwards – Leader London Borough of Hillingdon and London  
Councils Executive Lead for Schools and Children's Services

Florence Kroll CBE – Director for Children's Services, Royal Borough of  
Greenwich and Chair of Association of London Director of Children's  
Services (ALDCS)

# London's journey from *competition* to *collaboration*



## INNOVATION

Refusing to accept the status quo and committing to the need **do things differently** to improve the health, safety and wellbeing of London's children



## CULTURE

Developing a culture of **collaboration as our default**, **engaging partners** and taking a **values-driven** approach



## IMPACT

Delivering **sustainable change** at scale with **dedicated resource and infrastructure** that has **enhanced investment** in London



## INFLUENCE

**Amplifying our regional voice and the voice of our children** to **influence** national policy and achieve **lasting change**



# What we've achieved together...



**SECURE CHILDREN'S HOME - SHARED COMMITMENT TO DELIVER A SECURE CHILDREN'S HOME FOR LONDON**

**CARE LEAVERS COMPACT - RAISING THE BAR FOR LONDON'S CARE LEAVER OFFER**

**LEADERSHIP IN COLOUR - A REGIONAL COMMITMENT TO 'BAKING IN' RACIAL EQUITY**

**YOUR CHOICE - A YOUTH VIOLENCE REDUCTION PROGRAMME DESIGNED FOR AND BY LONDON**

**LONDON PLEDGE - DELIVERING WORKFORCE STABILITY AND COST AVOIDANCE**

**REGIONAL DATA & INTELLIGENCE - A SHARED DATASET FOR LONDON**

**SEND LEADERSHIP PROGRAMME - DEVELOPING SEND LEADERS IN LONDON - LAS, HEALTH AND PARENT/CARERS**

**PRACTICE SPOTLIGHT - 100+ EXAMPLES OF INNOVATIVE PRACTICE SHARED ACROSS LONDON**

**LONDON ACCOMMODATION PATHFINDER - INNOVATION TO KEEP CHILDREN SAFE AND OUT OF CUSTODY**

**LONDON SOCIAL WORK FOR CHILDREN - A SHARED RECRUITMENT PLATFORM THAT PROMOTES ALL OF LONDON**

**BIG LISTEN - LISTENING DIRECTLY TO OUR CSC SOCIAL WORKER WORKFORCE, WITH OVER 1,200 RESPONSES**

# **Ministerial / Permanent Secretary address from Department for Education**

Janet Daby

Minister for Children, Families and Well-Being

**‘Practice Spotlight at the heart of  
Sector-Led Improvement in London’**

Cllr Penny Frost – Lead Member for London Borough of Richmond

Glen Peache, Director of Family Services, Royal Borough of  
Kensington & Chelsea

Bev Hendricks, Executive Director - Children, Lifelong Learning and  
Families, London Borough of Merton



# Sector-led improvement:



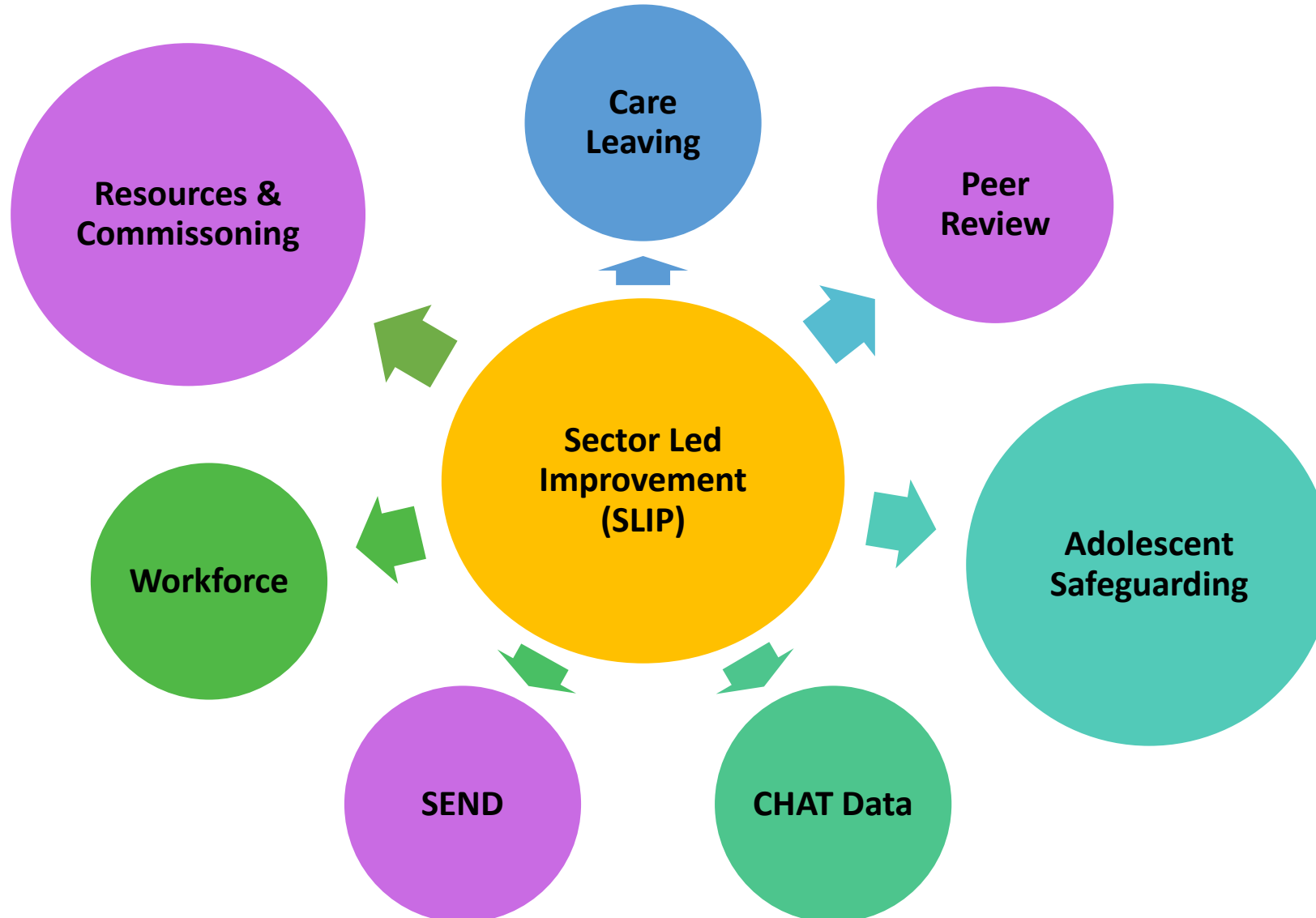
**ALDCS**

The Association of London  
Directors of Children's Services

London Children's Services

**Practice  
Spotlight**





From little acorns mighty oak trees grow





## Work across London

1. Racial equity

2. Impact for children with special educational needs and disabilities

3. Building safety for young Londoners

4. Supporting and strengthening the workforce

5. Delivering excellence for care leavers

6. Improving outcomes for children with complex needs who are in care or on the edge of care

7. Delivering together with health services

8. Making data speak for London's children

9. Delivering positive impact through early intervention



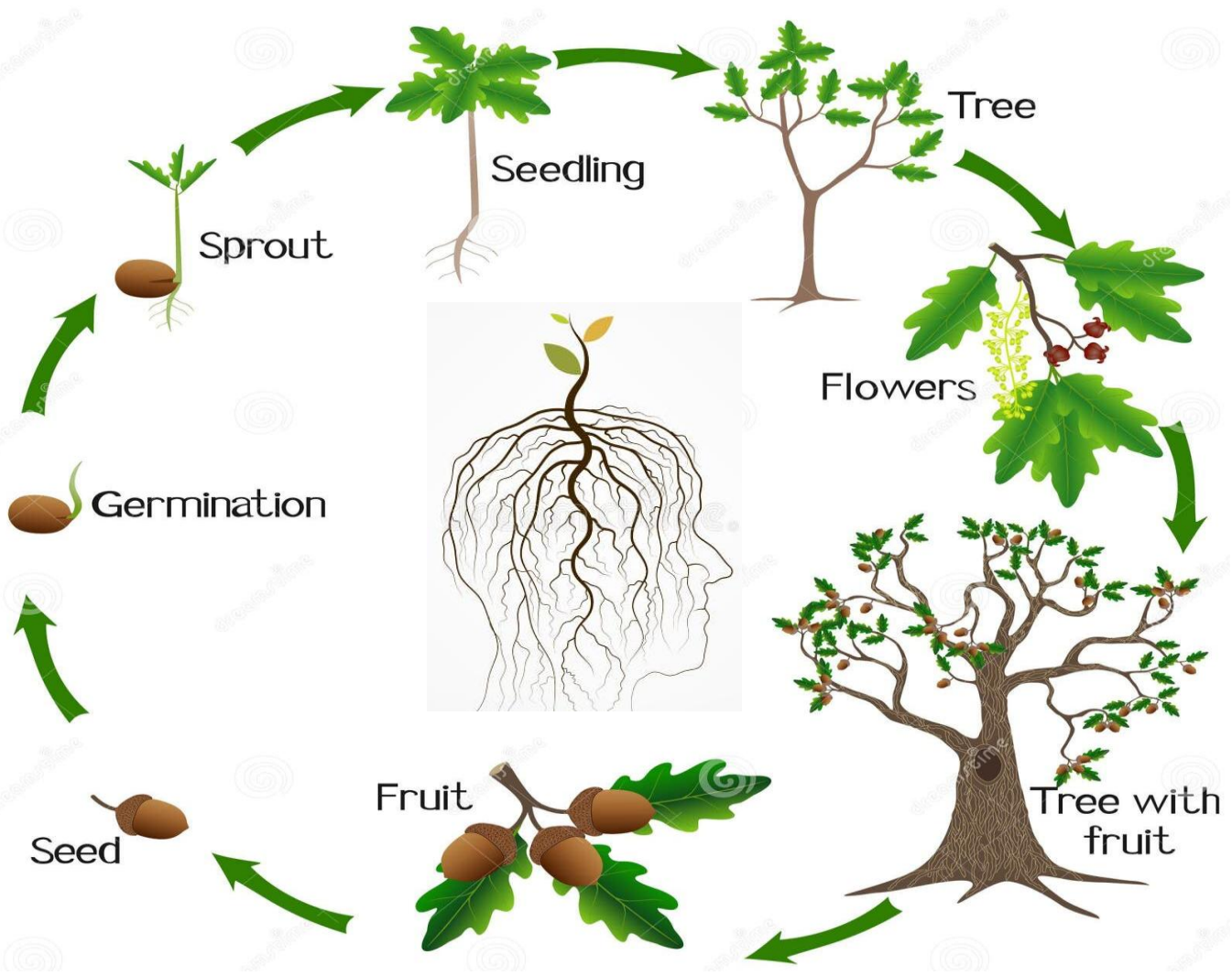
# ALDCS

The Association of London  
Directors of Children's Services

London Children's Services

## Practice Spotlight







# Practice Spotlight Briefings

London Borough of Hackney & London Borough of Lewisham  
Racial Equity

# Spotlight on Racial Justice: London Borough of Hackney

## Children and Education

### ANTI RACIST PRACTICE STANDARDS

Diane Benjamin- Director of Children and Families

Lisa Aldridge- Head of Safeguarding and Quality Assurance



**Context:**



**2014 - The Corporate Improving Outcomes for Young Black Men**

**History and tradition of grass routes radical and political history fighting racism**

**July 2017: Rally organised by Stand Up to Racism following the death of Rashan Charles**

**2020 Council passes Anti-Racism Motion**

**Looking  
Back at  
2021- 2022:**

**2021 Children and Education  
Directorate Anti-Racist Position  
Statement & shared language  
replacing 'BAME' with  
R. Campbell Stephens 'Black and  
Global Majority'**



**2021 first round of Anti-Racist  
Reflective Learning Programme  
delivered by youth work  
colleagues- now in its 4th year**



**May 2022: First Anti-Racist  
Praxis Conference: 'UNMASK,  
PREVENT & REPAIR  
RACIALISED TRAUMA'**

"I CAN'T GO  
A SINGLE DAY  
WITHOUT  
WANTING TO  
SCREAM, SHOUT  
CRY OR JUST  
GIVE UP!  
-CHILD Q



# Looking Back at 2022- 2025:

**2022 CYP Now:  
Workforce  
Development  
Award Winner**



**2023 Whole Council  
Anti-Racist Summit:  
BUILDING BETTER  
TOGETHER**

**2022: Peer  
reflective  
Spaces for  
Racialised  
Trauma**

**2024-2025  
Psychological  
Safety with  
Maria Takendis**

**2024-2025: DWD  
Leadership  
Programme, Realising  
Potential Programme  
and Systems Leader  
programmes**

CHILDREN AND EDUCATION ANTI-RACIST PRAXIS BLACK HISTORY SEASON EVENTS SCHEDULE 2022					
	Monday	Tuesday	Wednesday	Thursday	Friday
October			12 CFS: Brave space to talk about Race	13	14 Director's bulletin: staff takeover
			19 Anti-Racist Praxis Days in Hackney Schools	20 Live: Desert Island Discs with Rosemary Campbell-Stevens Anti-Racist Praxis Days in Hackney Schools	21 Director's bulletin: staff takeover
			26	27 Course: Antidoting Racial Trauma: Somatic Inquiry and Embodied Practices	28 Director's bulletin: staff takeover
November		1 Workshop: Moving from Ethnic Minority to Global Majority Mindset Masterclass	2	3	4 Director's bulletin: staff takeover
		8	9	10 Private Viewing of Stories Unfold	11

## Learning

- We must talk about racism, systems of whiteness and white supremacy
- Anti-Racism is business critical & must be resourced
- We have a responsibility to attend to racialised trauma across the workforce
- 'If you want to go fast, go alone, if you want to go far, go together' - consider this in the context of systems of whiteness



## Impact

- **HMIP Youth Justice Inspection feedback**
- **Anti-Racism Audits 2024**
- **Ofsted 2024 feedback**
- **Feedback and evaluation of Anti-Racist Reflective Learning Programmes, Anti-Racist Conference and Summit**
- **WRES 2025**



“I found it very informative and a great space to discuss what anti -racism looks like to different people. It was also a space I felt safe in as up to this point I was adamant about no longer having discussions about race in the workplace with colleagues as I find the subject triggering” (social worker)

“I think it was helpful to gather with colleagues including those from different services and discuss the issues. It helped to support an awareness that there is a shared goal in respect to ARP standards” (social worker)

“I think Hackney's doing a really good job of getting these conversations going and maintaining the momentum - there's genuinely been so many conversations happening around the office about anti-racist practice since the start of my placement and I think it's creating a real open to learning culture. The [standards] training highlighted that we need to challenge/inform other professionals and ourselves, especially from a safeguarding and reviewing or quality assurance point of view” (practitioner)

**‘Change must start from the top - change that is coupled with intention, commitment and then action. Dismantling systemic racism in the workplace starts with you.’**

***Shereen Daniels - The Anti-Racist Organisation***



# Developing an Anti-Racist Framework in Lewisham



## *Families First* for Children

13<sup>th</sup> May 2025

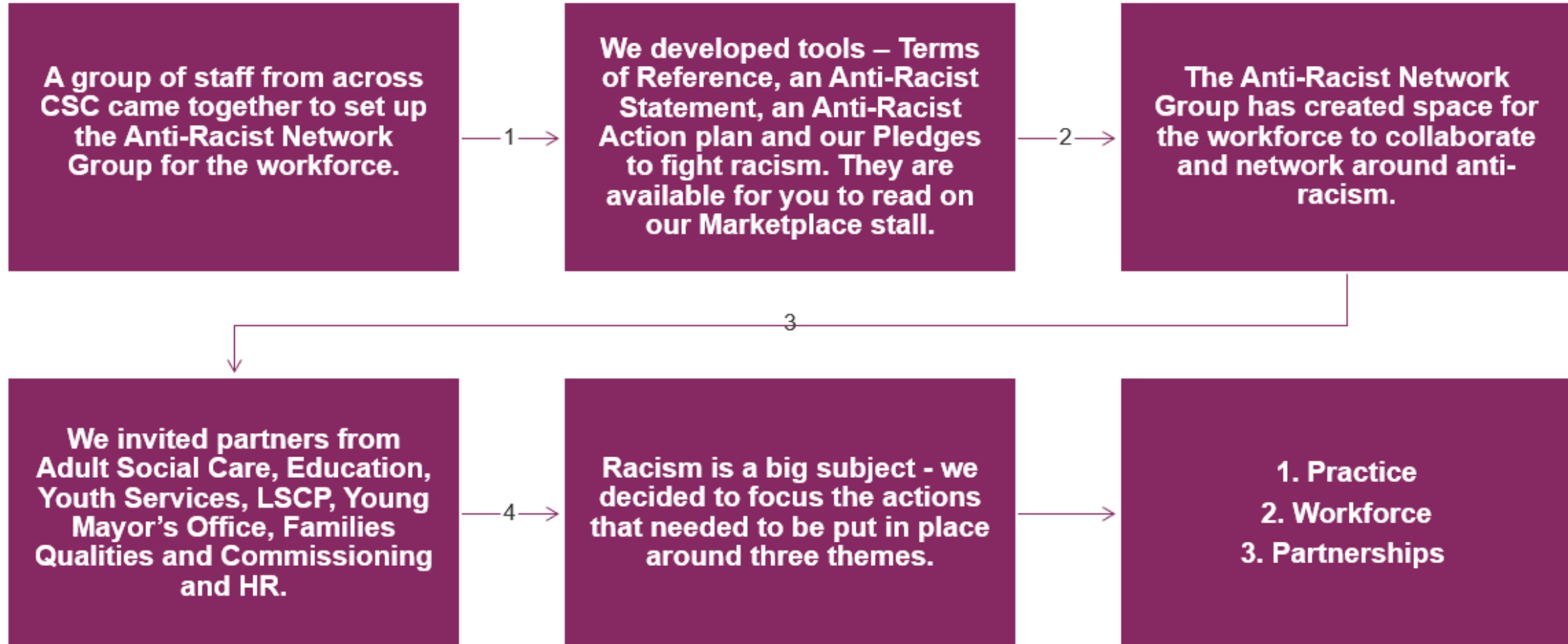


# Developing an Anti-Racist Framework in Lewisham

- Prompted by the murder of George Floyd in May 2020
- Started with a 'Series of Conversations' with the Children's Social Care (CSC) workforce in 2020
- Staff were fed up with talking and wanted to see **ACTION** to tackle racism



# Developing an Anti-Racist Culture



# Anti-Racist Training for Senior Leaders

Reflective sessions x 6 over 12 months – facilitated by the Tavistock for the extended senior management team.

Challenges – black and ethnically diverse staff found it retraumatising at times due to their personal and professional experiences of racism.

White senior managers had the opportunity to hear the experiences of racism from their black and ethnically diverse colleagues.

White senior managers explored their white privilege and whiteness.

Different forms of racism were shared including structural and systemic; micro aggressions; language and data around disproportionality.

We made personal pledges around anti-racism and being active allies working in coalition with each other.



# The Journey – Progress since 2020

**The Anti-Racist Action Plan**

**Anti-Racist Thinking Spaces**

**Coaching for black and ethnically diverse staff**

**Black and ethnically diverse leadership courses available to staff**

**Signs of Safety practice framework updated**

**In 2022 we established our CYP annual Black History Month event**

**CSC Vision and Values updated to reflect anti-racist practice**

**Staff conference incorporating anti-racism was held in 2023**

**Open Space set up to support staff**

# What have we learnt?

## Leadership

With SMT support initiate top-down anti-racist training and training for the workforce; this shows organisational commitment to an anti-racist culture.

## Support

Offer emotional support, recognise past trauma may feature during training; use a trauma informed approach. Staff leading the work should prioritise self care and support networks. Offer coaching and mentoring.

## Collaboration

Working together is key to developing an anti-racist leadership and a workforce that positively impacts children, families and partnership working. Allyship is vital to make progress.

## Values

Stay focused, resilient and tenacious. Use allyship and coalition. Treat resistance as noise. Identify an anti-racist lead to drive change.

# Impact and Outcomes

Anti-racist training has been implemented in the Families Quality & Commissioning division and extended to team managers and advanced practitioners in both FQC and Children's Social Care.

Improvement in practice – a golden thread of always considering anti-racism in practice with families to understand the lived experiences of black and ethnically diverse children and families.

Opportunities are increasing (beginning to break the glass ceiling) for black and ethnically diverse staff to move into senior management positions.

Staff report that they are more 'comfortable with the uncomfortable' in conversations and meetings.

LSCP Anti-Racist sub-group has been set up to promote anti-racist partnership working and respectful challenge.

HR have implemented anonymised recruitment. Recruitment panels are diverse and represent the community we serve.



## Feedback and Influence

Articles published in Research in Practice and Children and Young People now

<https://www.researchinpractice.org.uk/children/news-views/2024/august/transforming-anti-racist-leadership-in-lewisham-council/>

<https://www.cypnow.co.uk/content/features/making-children-s-services-leadership-more-diverse/>

### Ofsted ILACS 2023

*The exemplary anti-racist practice networking and safe space platform has positively supported staff from black and global majority backgrounds. Black workers describe the platform as innovative. They told inspectors that they feel valued by having their diversity and aspirations for career progression recognised by leaders.*

# Feedback from the Workforce

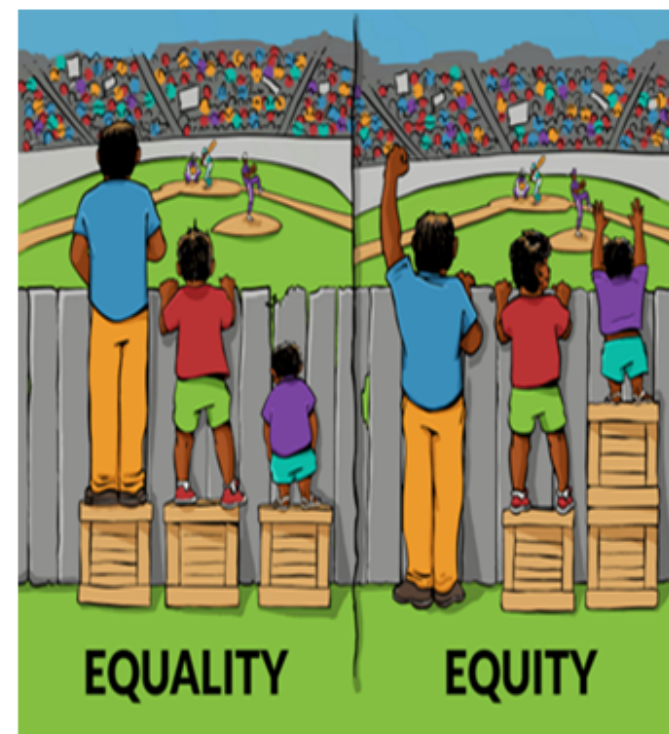
## Staff Survey 2024

**87% aware of anti-racist work, anti-discriminatory practice**

**72% describe Lewisham CSC as anti-racist and anti-discriminatory**

**76% feel they make a positive difference in their families' lives**

**Staff tell us there is reflective challenge around language, unconscious bias and micro-aggressions.  
Evidence of equitable practice across CYP.**





"There is only one way to eat an elephant – one bite at a time"

# Practice Spotlight Briefings

London Borough of Haringey

Stop and Search



**METROPOLITAN  
POLICE**

**Haringey**  
LONDON


**LiiA**  
LONDON INNOVATION AND IMPROVEMENT ALLIANCE

# **STOP AND SEARCH – A SAFEGUARDING PERSPECTIVE**

**ANN GRAHAM, BEVERLEY HENDRICKS & DAVE BRADLEY**



# The Why?

- Findings from Child Safeguarding Practice Reviews.
- Children are at the  of what we do.



# Innovation

- To look at Stop and Search through a safeguarding lens.
- Emphasising the partnership response to safeguarding children.
- Identifying children who would not otherwise have been known and to facilitate early intervention.

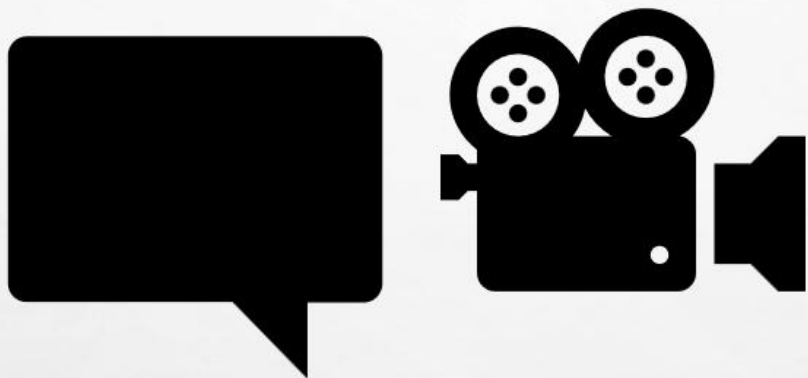


# Project Impact

- Routine discussions about stop and search by safeguarding professionals.
- Our work has contributed to the MPS Child Strategy, Stop and Search Charter.

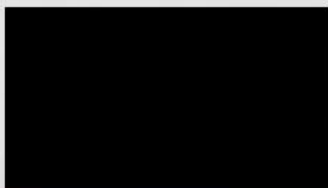
IMPACT





Hear from our partners and children and young people impacted by this work

# Voice of the People



**Sustainability**

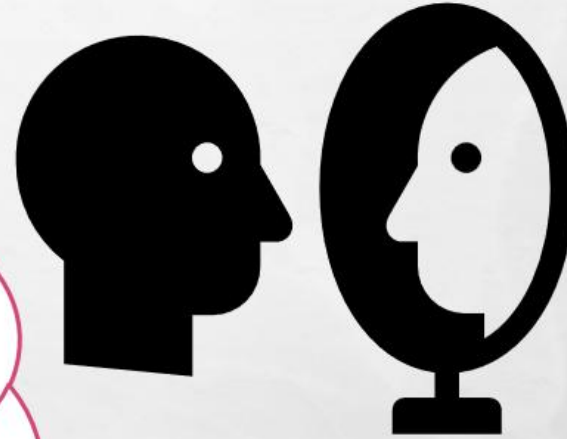
**Small Scale**

**Test  
Recommendations**

**Embed practice**

# Reflections

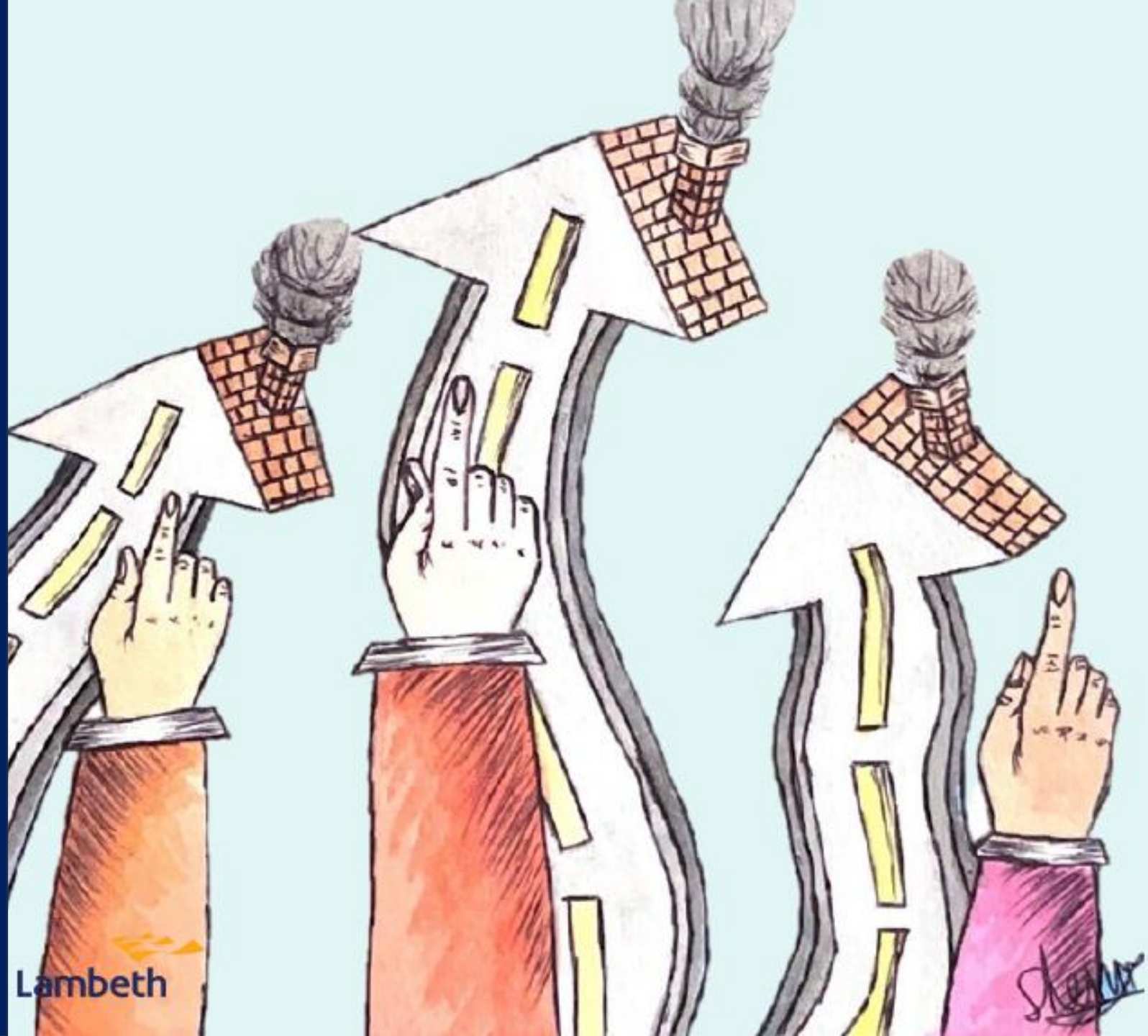
- Strengthening cohesive partnership between Local Authority Areas and Police.
- Continued focus on Children and Young People.



# Practice Spotlight Briefings

London Borough of Lambeth  
Route to Independence Pathway

# Lambeth Routes to Independence Pathway



I think it would have been possible to try to get my Dad to let me stay at home. It was really hard moving and having to do everything myself.

There are too many people here, I want to be in a smaller place

There are not enough staff here. They can't cope when things kick off. And there aren't enough staff to work 1-1 with us.

Lots of people can't cope when they move onto their own place from here. For me, I would really like to have some kind of support, maybe like once per week, just to make sure that I know what I'm doing

I would have liked to stay at home, and make it work with my mum if I could.

I think it would be better if they lower the number of young people in a building. There's too many in this hostel

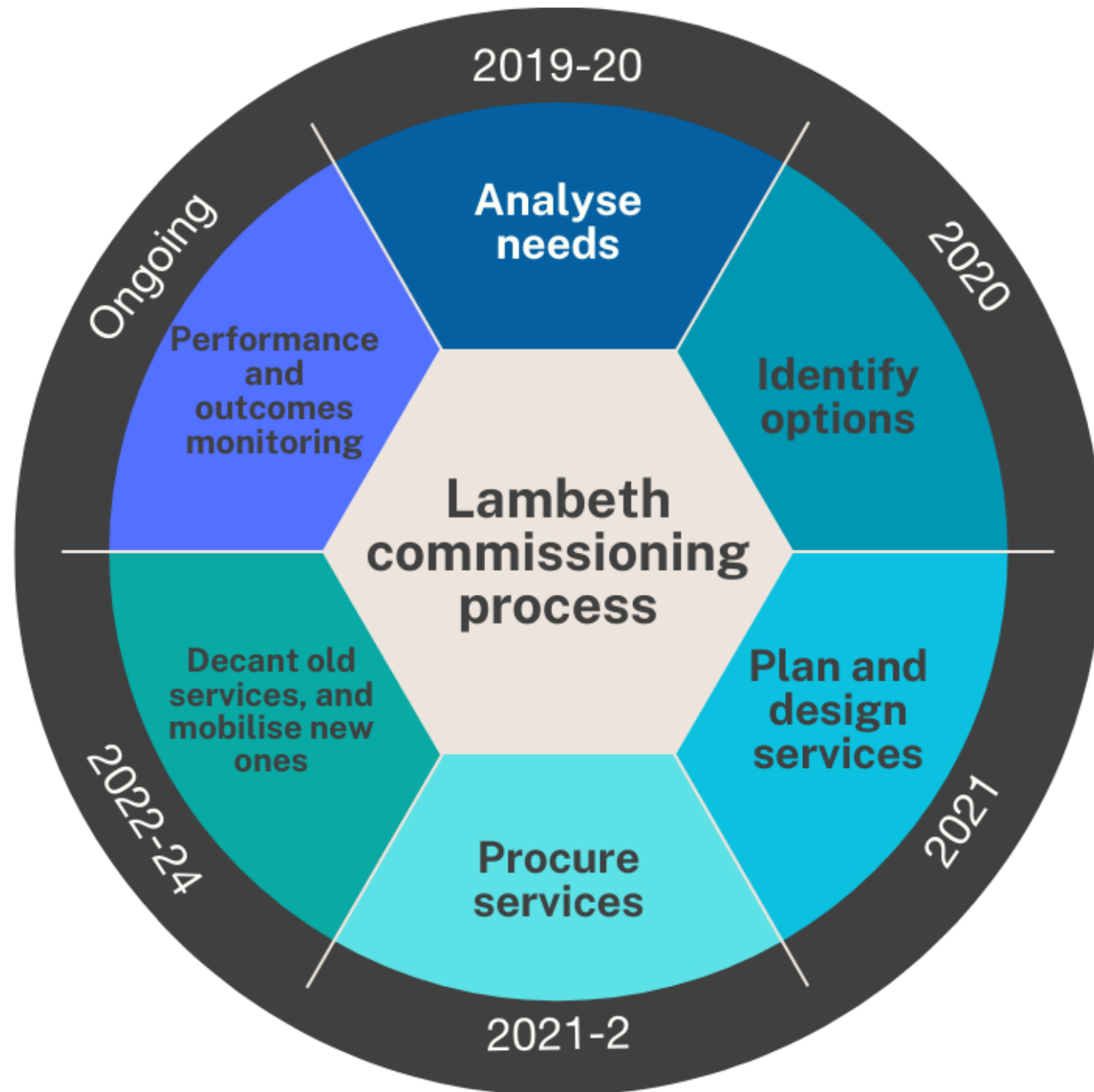
My brothers were in gangs around the Brixton and Stockwell area, so I'm not safe here in Stockwell. I have to call a taxi every time I leave the building.

They definitely need to do more work with us to prepare us for move on

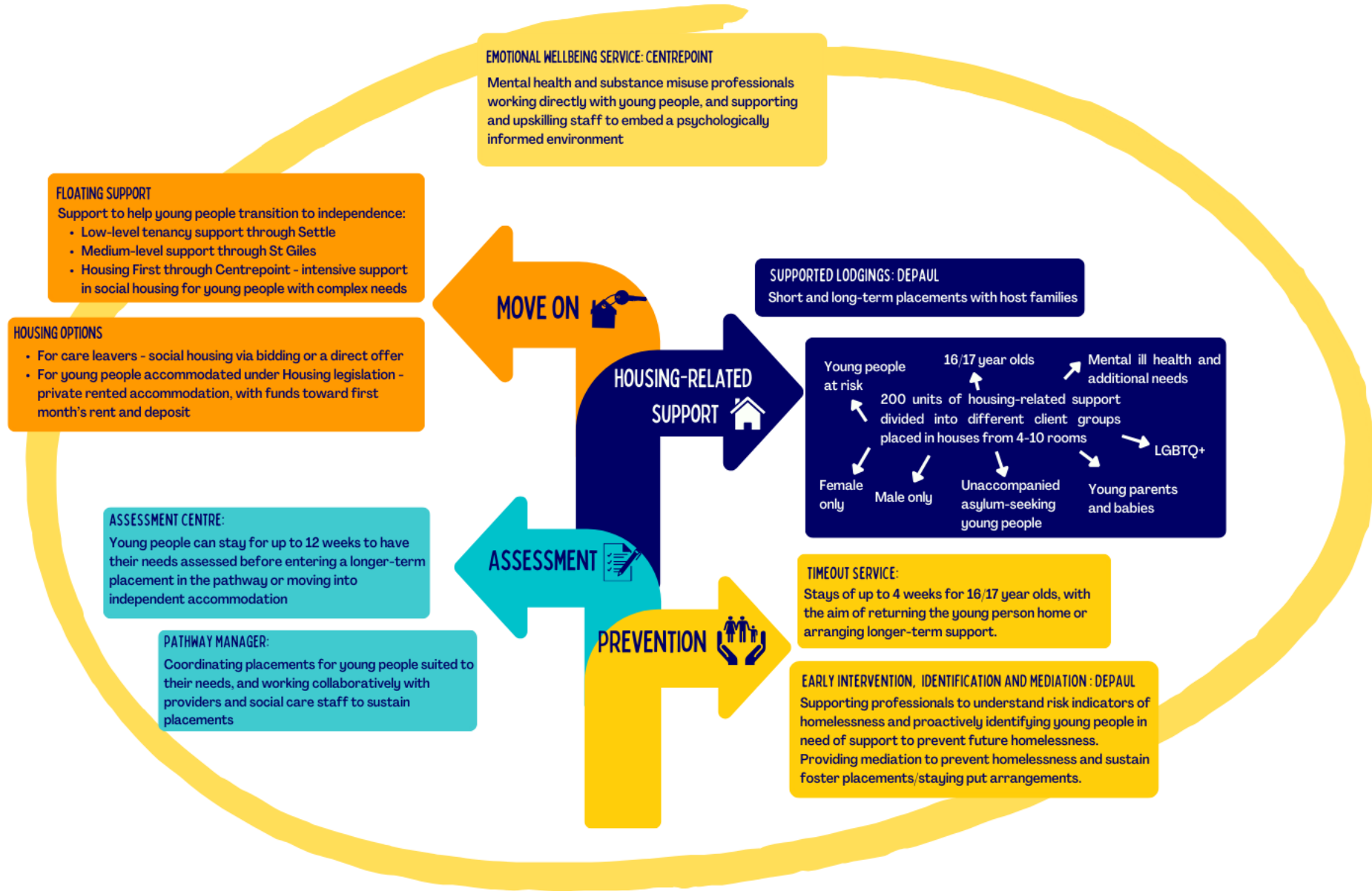
People with mental health issues should be in smaller services, not the big hostels



**Lambeth**



# ROUTES TO INDEPENDENCE PATHWAY



**0 evictions for young people under floating support services**

**29 young people currently receiving therapy**

**£2.5m spend avoidance projected for 24/5**

When we done the assessment for him to move in, he was looking at the ground. Wouldn't look at us. Poor personal hygiene. You meet this young man now, he's looking in your eyes. Smiles. He looks so good. Hair, good clothes. Good. Like you could tell the difference this has made to him.

And literally I've seen the gradual improvements where these young people were unable to leave their house and want to do daily tasks, and they've been able to get back on their feet with their support of the wellbeing service

One of the young people who moved from a hostel, she said it was crazy. It was too much. It was just so many different people, different needs... She said she prefers it where she is now in the service, which is smaller, everybody has more or less the same level of support need. Different support needs but the same kind of level.



**Lambeth**



**London Children's Services**

**Practice  
Spotlight**

**MARKETPLACE**

## London Children's Services

# Practice Spotlight

## MARKETPLACE

## Practice Spotlight Digital Area



**Hackney  
Racial Equity & Inclusion  
Service**

**Lewisham  
Anti-Racist Practice  
Framework**

**Westminster & RBKC (Bi-  
Borough)  
Anti-Racist Practice and  
Focus on Disproportionality**

**Enfield  
Enfield Communication  
Advisory Support Service  
(ECASS)**

**Merton  
Meeting the Needs of  
Pupils with Autism in  
Mainstream Classrooms**

**Haringey  
Stop and Search  
Safeguarding Project**

**Redbridge  
Your Choice**

**Barking & Dagenham  
The Culturally Sensitive  
Therapy Project**

**Sutton  
Universal Parenting  
Support Service**

**Lambeth  
Route to Independence  
Pathway**

**Greenwich  
Integrated Clinical Team  
(care leavers with mental  
health and wellbeing needs)**

**Waltham Forest -  
Mockingbird Service**

**Brent  
Care Journey's/Children  
in Care Councils**

**Barking & Dagenham  
The Sunrise Hub in  
Partnership**

**Redbridge  
Pre-post Birth Service**

**Camden  
Safeguarding and Social Work  
Performance App**

**Tower Hamlets  
Diamond Project**

# Practice Spotlight Briefings

London Borough of Redbridge  
Your Choice

*Introduced by Lib Peck, Director of the Mayor of London's Violence  
Reduction Unit (VRU)*



# YOUR CHOICE



Redbridge Education  
and Inclusion Service  
shaping extraordinary futures

Marco Temes Serrano, Educational Psychologist, Clinical Lead for Your Choice  
Lakshmi Sharma, Senior Assistant Educational Psychologist, Your Choice Coordinator

## Educational Psychology Service



## REDBRIDGE EDUCATIONAL WELLBEING TEAM (REWT)



**PILOT Stage:** The REWT Team were involved in the Pilot stage working with the following settings:

- Redbridge Alternative Provision (RAP) - PRU
- Beacon Business Innovation Hub (BBIH) – Alternative provision for students with a range of support needs

### Senior Specialist Educational Psychologist

- ❖ Claudia Noel-Michael

### Educational Psychologist

- ❖ Marco Temes Serrano

### Trainee Educational Psychologist

- ❖ Lydia Grant and Toria Thomson

### Senior Assistant Educational Psychologists

- ❖ Charlotte Troth (SMHL)
- ❖ Lakshmi Sharma (Your Choice)
- ❖ Karen Helliwell (ELSA)
- ❖ Shoala Illyas-Jarret (RAW)
- ❖ Nesrin Fehmi (REA)

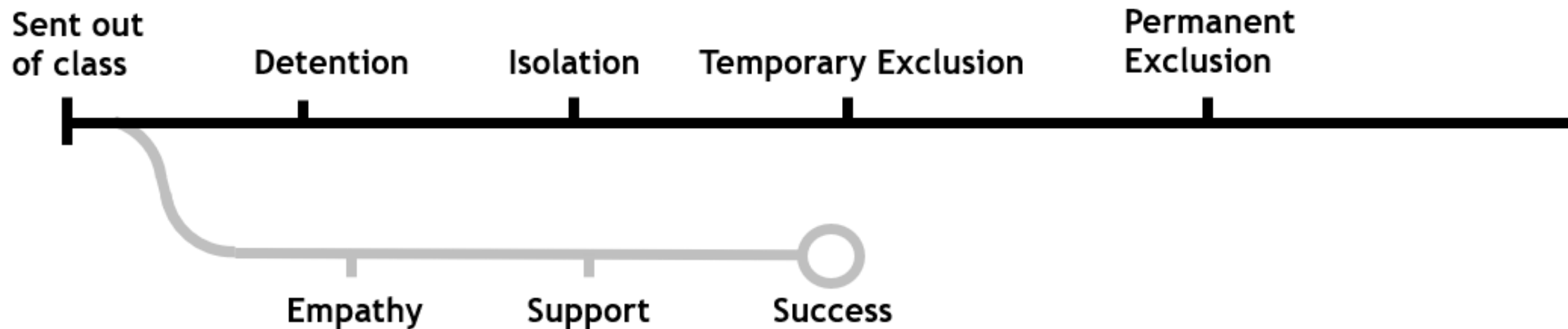
### Assistant Educational Psychologists

- ❖ Jess Luddington
- ❖ Nuno Felix
- ❖ Sumeyra Yaman
- ❖ Elaina Robertson

### Business Manager

- ❖ Dianne Murdock

# School to Prison Line



## Secondary Schools:

Predominance of rules and sanctions over emotional support.

Strain of increasing academic pressures.

Reduced capacity for pastoral care.

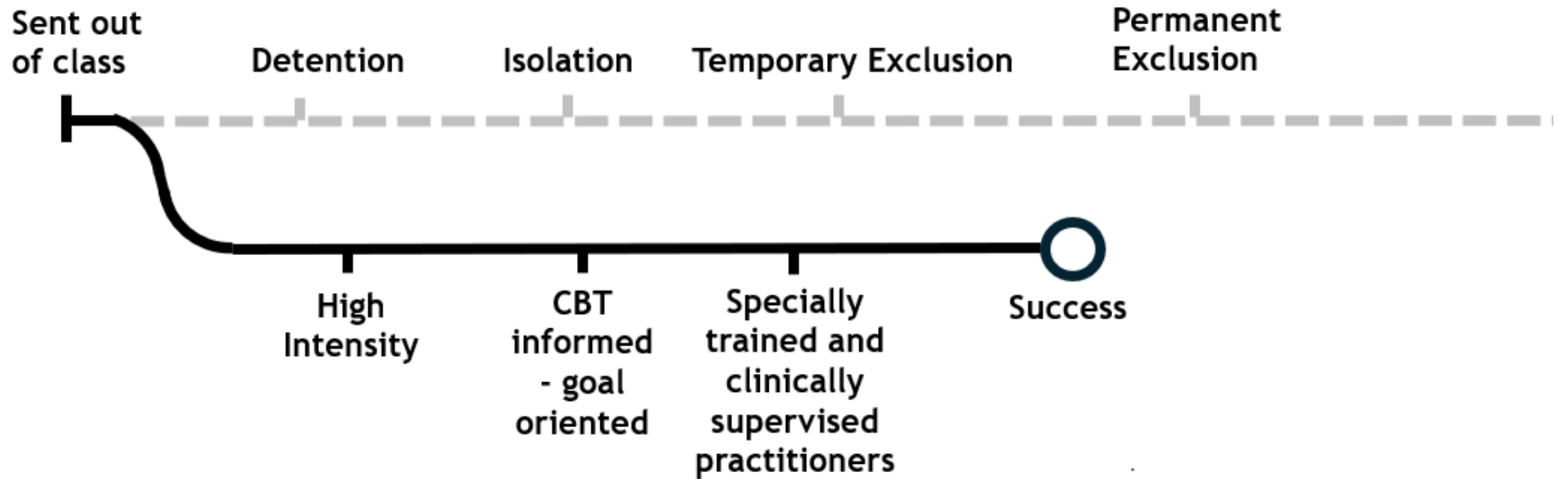
Higher levels of behavioral exclusions.

## Current Mental Health Crisis

- Addressing increased rates of anxiety, depression, and emotional distress among students.

- Responding to the rise in Emotional Based School Avoidance (EBSA).

# School to Success Line



- Exclusions, challenging behaviour , multiple failed placements.
- Struggled with emotional regulation, social skills, maintaining relationships with others.
- Student A had no hopes for their future or anything going on in her life.



See  
head now



**Parent:**

“Student A has been a lot better and nicer at home. Student A **talks to me more at home and opens up to me and we have grown closer.** It is also nice to see her going boxing and get her anger out **and have something for her future**”

**Student A:**

“It’s been going really well. I thought I was going to get angry every single time. **I feel like I’m a better version of myself.**”

**ELSA**

Student A has **built better relationships** with others and now spends more time with her family, **Improved communication** with others and **found new hobbies and is continuing to work on new skills** in Boxing, Basketball and Art which she never previously expressed an interest in. Student A had been introduced to **CBT techniques which she now uses to support herself and manage as well as understand her own emotions better.**

**Teacher:**

“Student A’s general attitude has become much more positive. she has learned to manage and **control her anger** and speaks more about her future.



# Redbridge Your Choice Delivery Model

We are the only LA in London using specially trained ELSAs to deliver Your Choice in schools, supported by Educational Psychologists and Assistants.

"Your Choice has really changed the way that I **structure** my ELSA sessions. YP learn more by engaging, and **creating fun, relaxed nurturing environment**, it's beneficial for the young person.

ELSA



" The project being named "Your Choice" empowered young people into feeling as though they had the power to decide what to do and how to navigate this project. This allowed young people to feel validated gave them as a sense of importance".

ELSA

Treatment: 8 schools, 50 YP

Control: 3 schools 33 YP

Total YP: 83

# Thank you!

## *Credits to the Redbridge Your Choice Team:*

- *Claudia Noel- Michael*
- *Marco Temes Serrano*
- *Lakshmi Sharma*
- *Nesrin Fehmi*
- *Nuno Felix*
- *Beth Pargeter*
- *Tia Hibbert*
- *ALL our wonderful ELSAs*



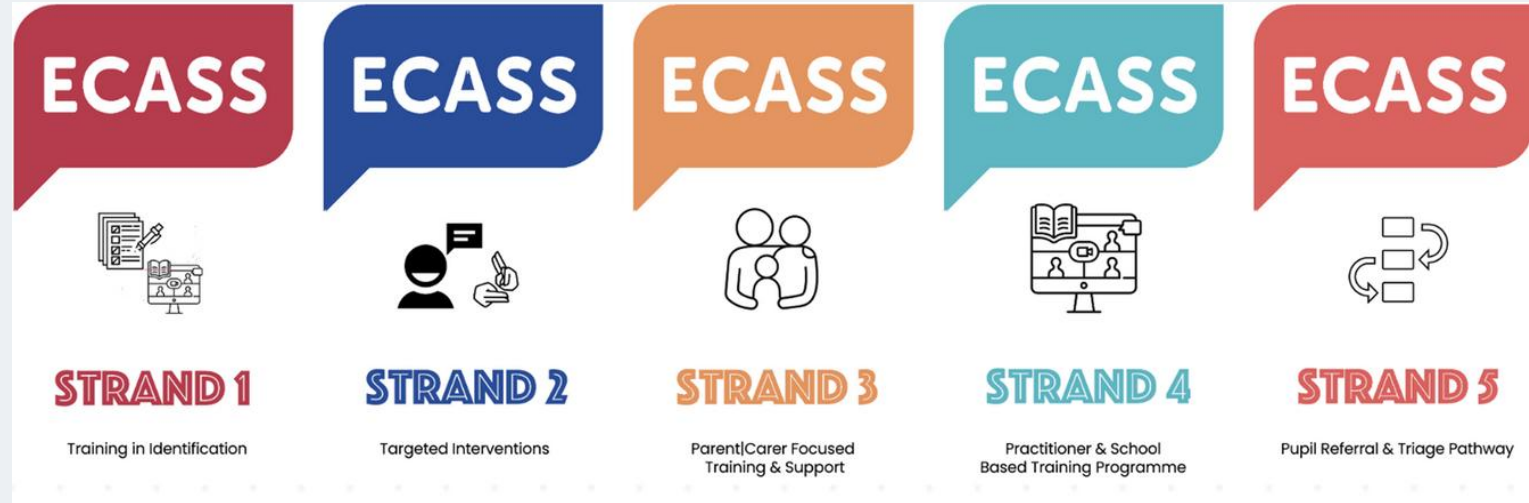
# Practice Spotlight Briefings

London Borough of Enfield

Enfield Communication Advisory Support Service (ECASS)

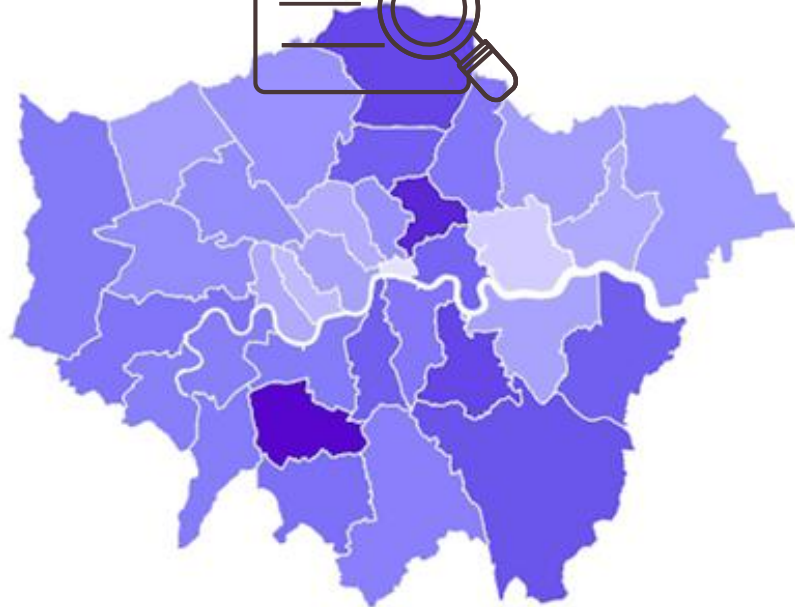
# Enfield Communication Advisory Support Service

ALDCS Summit 2025



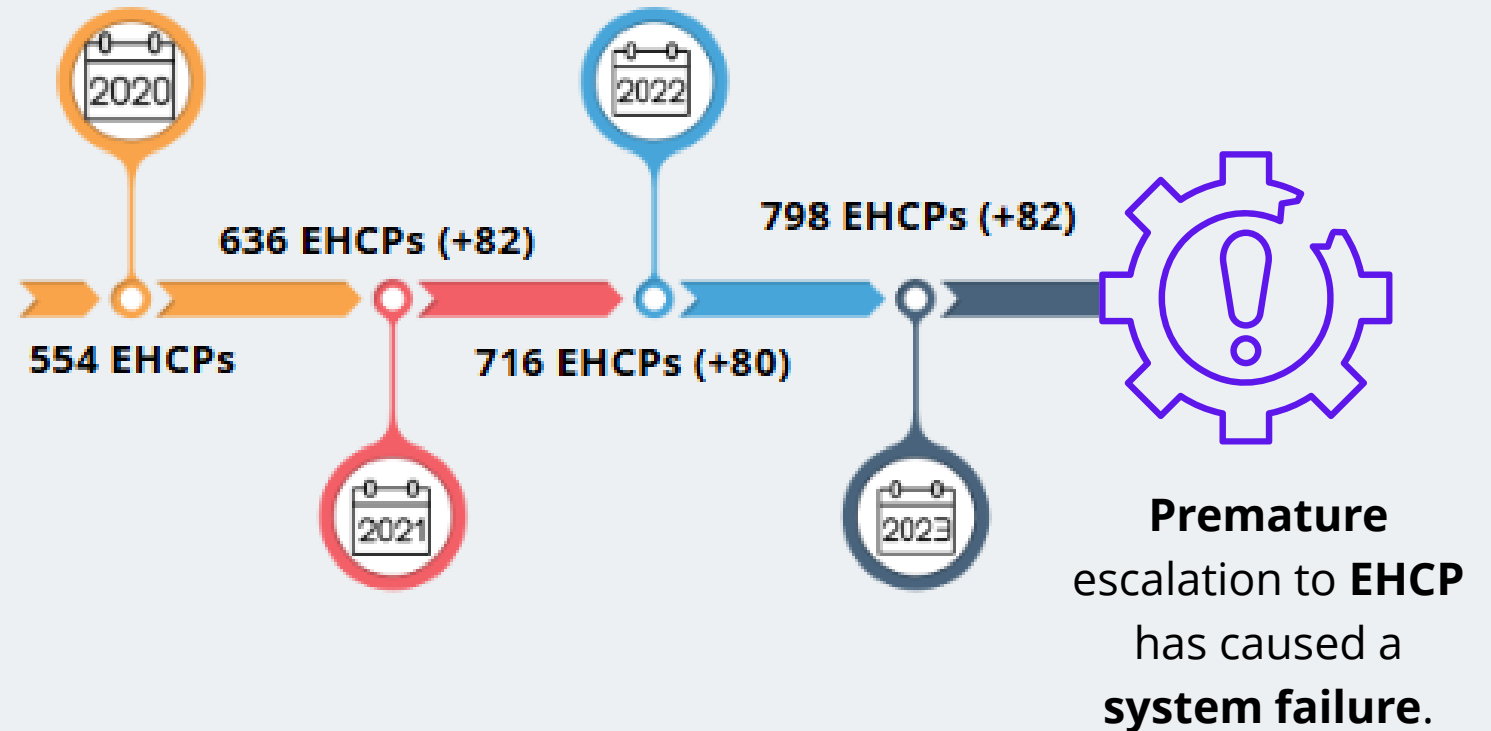
**"ECASS: supporting schools to identify needs early, to provide the right support, in the right place, at the right time."**

# The Enfield Context



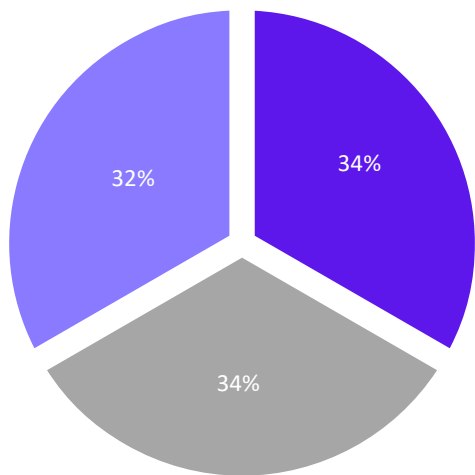
Nationally **1.9 million** children have **long term SLCN** which they will not grow out of. This equates to **10%** of all **primary aged children** in Years 1-6

**Speech, Language and Communication Needs**, (SLCN) is ranked the highest category of need for children and young people in Enfield.



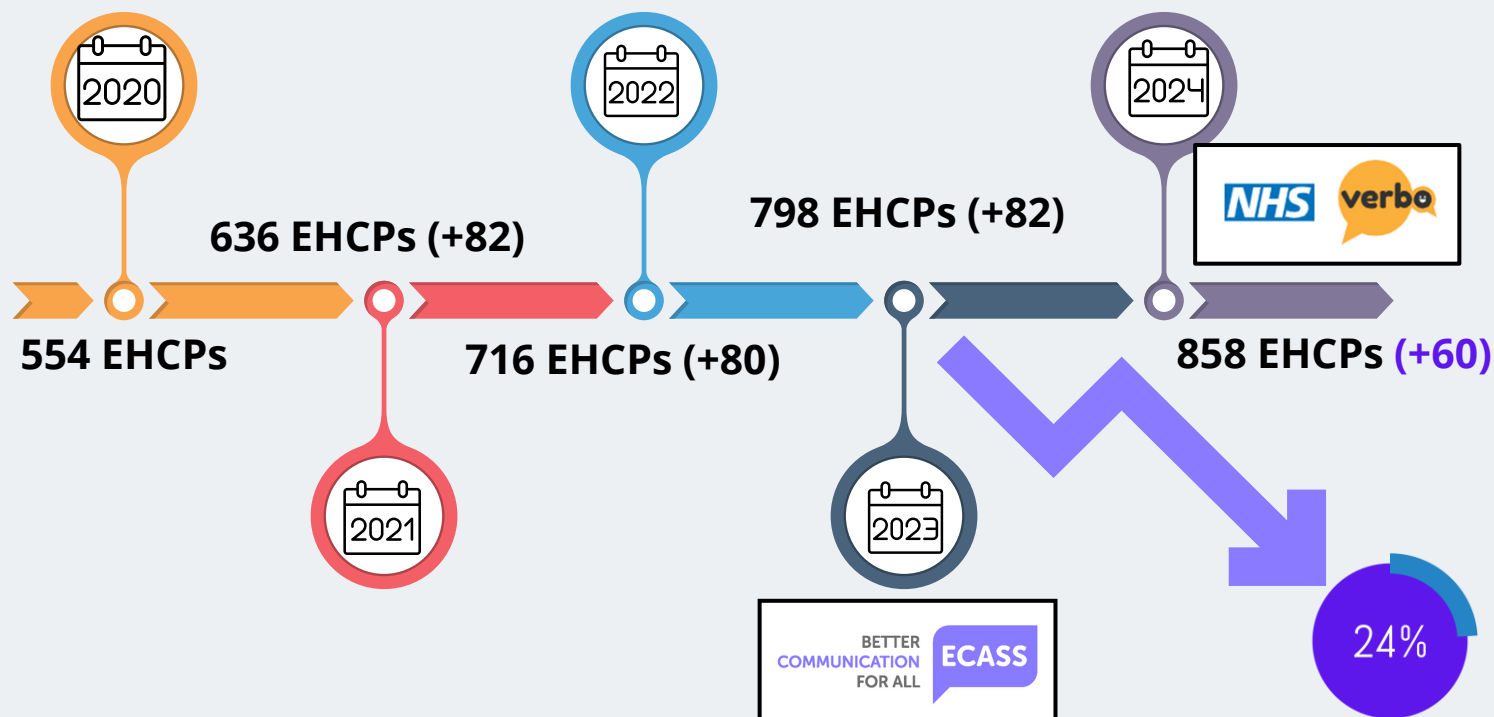
# The Need for Change...

In **2023**, an **analysis** of **EHCPs** in Enfield showed that **2/3** may **not** have been **necessary** and **needs** could be **met** through **alternative pathway solutions**



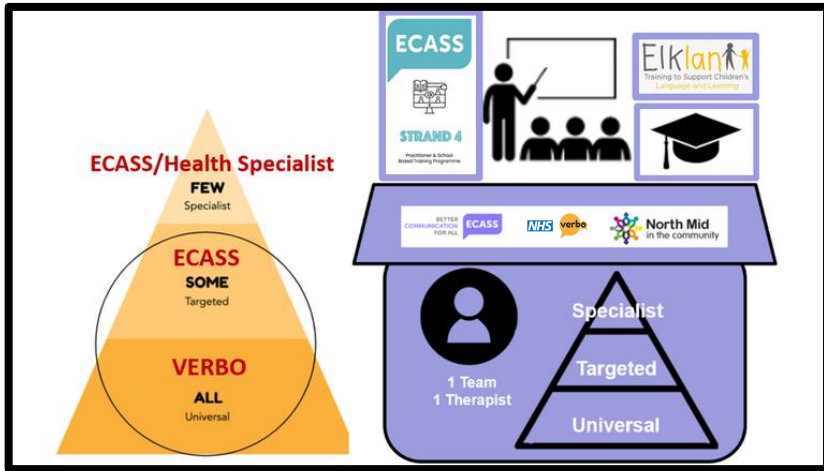
EHCP Required & Ideal Outcome  
 EHCP May Not Have Been Required  
 EHCP Required But Unideal Outcome

**Insufficient** universal and targeted S&L provision had encouraged schools & parents to **prematurely request** a **needs assessment** in order to access services

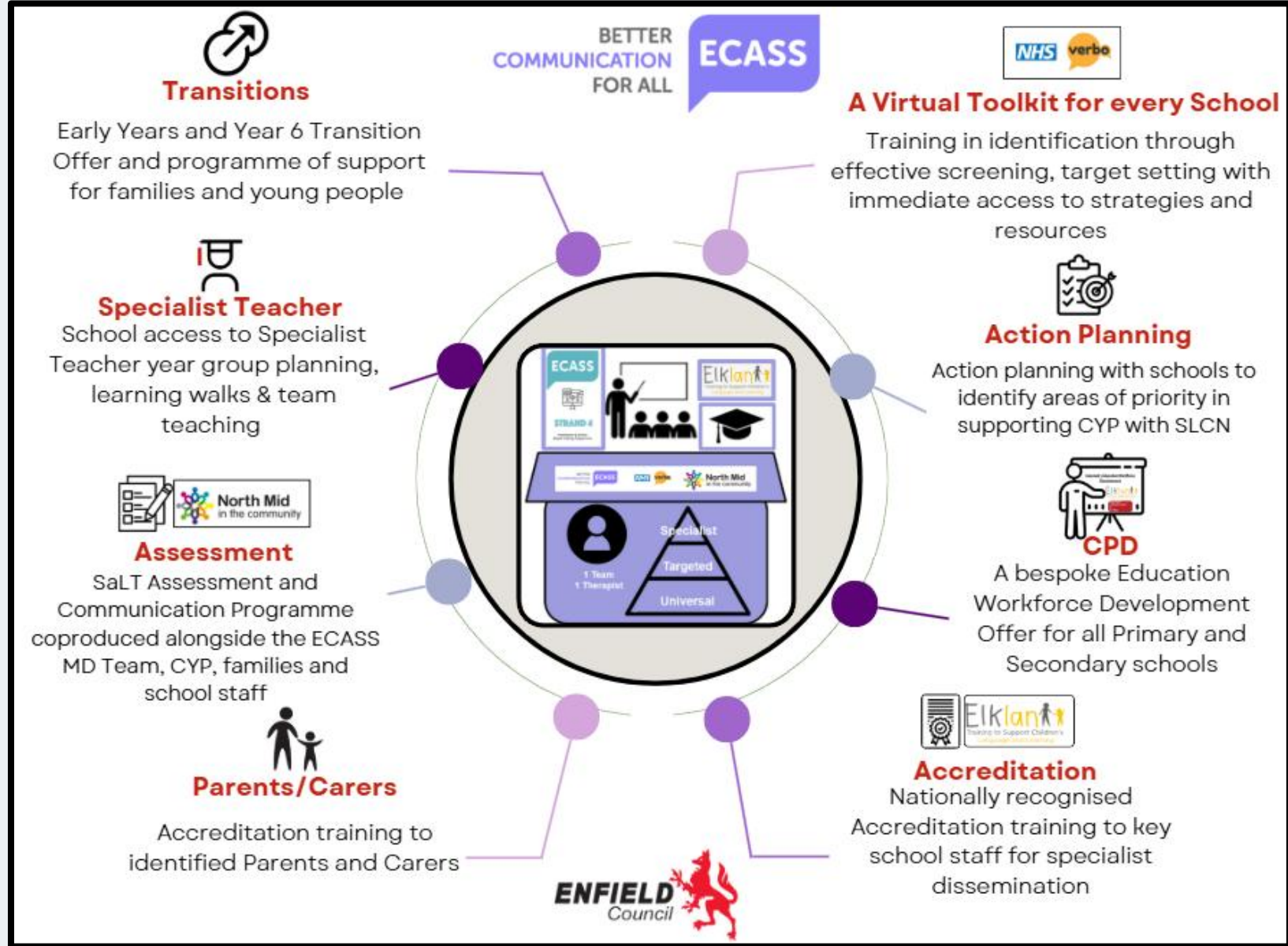


In 2024 Enfield started to notice a **24% decrease** in growth in EHCPs for Children and Young People with SLCN

# The Interim Pilot



## One partnership team, one therapist - coproducing a needs led offer for each school



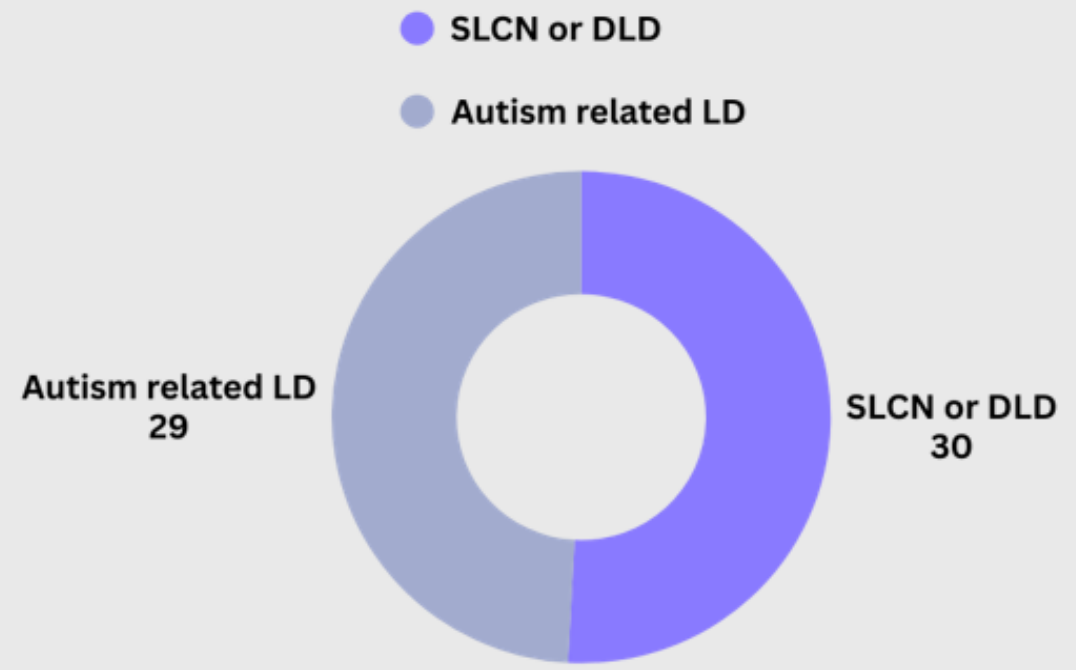
# Impact Snapshot on EHCNA Requests in 12 pilot schools Post ECASS Intervention



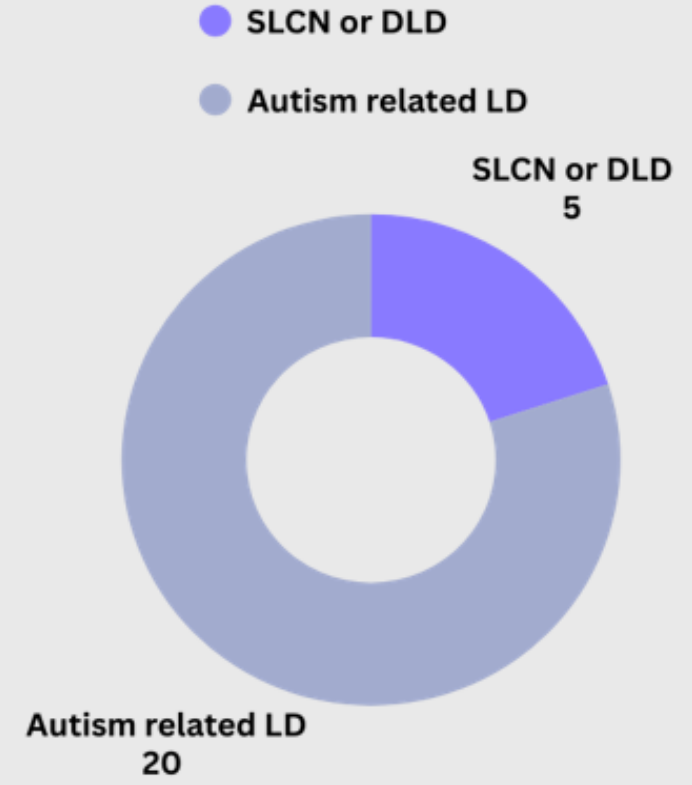
**66%** decrease in EHCNA Requests for SLCN and Language Disorder associated with an autism diagnosis

**31%** decrease in EHCNA Requests for DLD and or SLCN with no other diagnosis

No. of EHCNA Requests Pre ECASS Pilot Intervention



No. of EHCNA Requests Post ECASS Pilot Intervention





[www.ECASS.org.uk](http://www.ECASS.org.uk)



[ECASS@enfield.gov.uk](mailto:ECASS@enfield.gov.uk)



[hello@verboapp.co.uk](mailto:hello@verboapp.co.uk)

BETTER  
COMMUNICATION  
FOR ALL

**ECASS**

**SCAN ME**



Scan the QR Code to find out more about





# **‘Effective Partnership Working with Health’ Panel Discussion**

Mayor Caroline Woodley – Mayor of Hackney

Caroline Clarke - NHS London Regional Director

Tim Aldridge – Director of Children’s Services for London Borough of  
Camden

Elaine Allegretti – Director of Children’s Services for London Borough  
of Barking & Dagenham

# **Table Discussion - Looking Ahead for London's Children at a Time of Change**

Over to you!

## Plenary & Closing Remarks

Florence Kroll CBE – Director for Children's Services, Royal Borough of Greenwich and Chair of Association of London Director of Children's Services (ALDCS)

Ade Adetosoye CBE - Chief Executive of the London Borough Bromley, Chief Executives Lead Adviser for Children Services

Looking Ahead...



**REGIONAL CARE ARRANGEMENTS**

**SPENDING REVIEW AND LOCAL AUTHORITY GRANT REVIEW**

**DEVOLUTION / PUBLIC SERVICE REFORM**

**CHILDREN'S WELL BEING AND SCHOOLS BILL**

**GOVERNMENT MISSIONS: OPPORTUNITY, SAFER STREETS, GROWTH, GREEN ENERGY, NHS FIT FOR FUTURE**

**CHILD POVERTY STRATEGY**

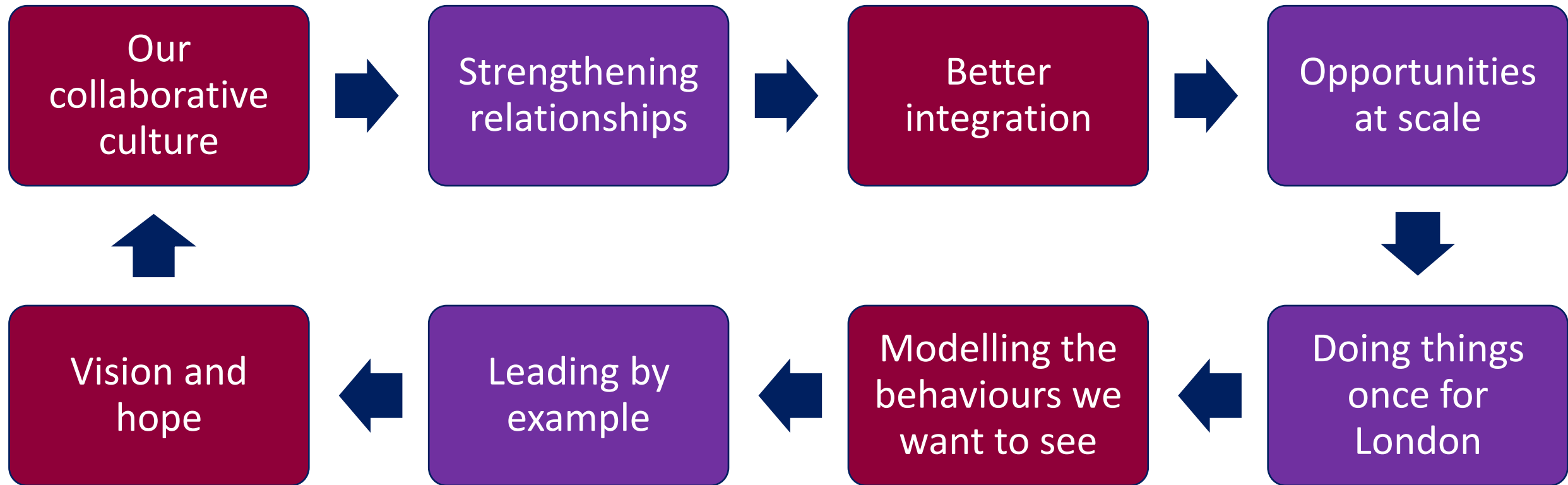
**MULTI-AGENCY SOCIAL CARE TRANSFORMATION**

**SEND REFORMS**

**HEALTH TRANSFORMATION**

**HOUSING AND WORKFORCE SUFFICIENCY**

# In uncertain times, lean into...



# Thank You!



## Event Feedback Form



London Children's Services

**Practice  
Spotlight**

