

# LAP SUMMARY for professionals

**This new project will be suitable for 16 to 17 year old males.**

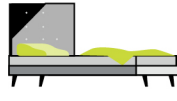
LAP can be for up to 6 months and this will be another option to a remand, prison sentence or resettlement from prison.



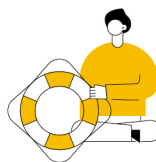
**Increase your  
life skills**



**Education and  
Employment**



**Own bedroom**



**24 Hour  
support from  
worker**

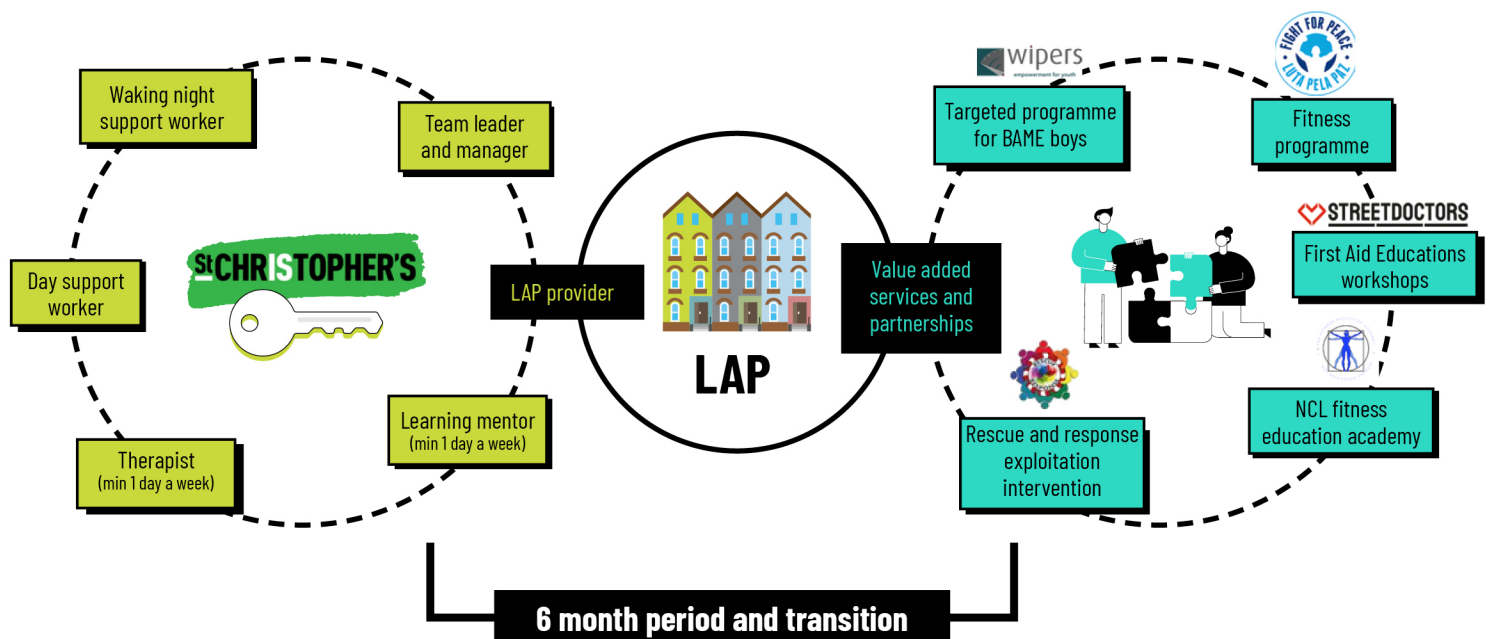


**Support with  
health**



**Support to  
reach  
your goals**

## INTERVENTION & PARTNERSHIP MODEL:



The scaffolding of clinical support will be the start of the journey

Interventions can be used as YOS contacts

Each child will have a different experience based on needs and LA resource